

Anti-OTX1 antibody (4-16 aa) [R04-1D1] (STJA0012515)

STJA0012515

GENERAL INFORMATION

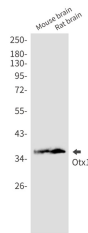
Product Type	Primary antibodies
Short Description	Rabbit monoclonal antibody anti-OTX1 (4-16 aa) is suitable for use in Western Blot research applications.
Applications	WB
Host/Source	Rabbit
Reactivity	Human/Mouse/Rat

PRODUCT PROPERTIES

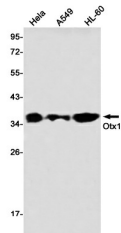
Clonality	Monoclonal
Clone ID	R04-1D1
Concentration	0.3 mg/ml
Conjugation	Unconjugated
Purification	Affinity Purified
Dilution Range	WB 1:500-1:1000
Formulation	50mM Tris-Glycine (pH7.4) , 0.15M NaCl, 40% Glycerol, 0.01% Sodium azide and 0.05% BSA
Isotype	IgG
Storage Instruction	Store at 4°C short term. Aliquot and store at -20°C long term. Avoid freeze/thaw cycles.

TARGET INFORMATION

Gene ID	5013
Gene Symbol	OTX1
Uniprot ID	OTX1_HUMAN
Immunogen	A synthetic peptide of human Otx1
Immunogen Region	4-16 aa
Specificity	
Immunogen Sequence	



Western blot analysis of Otx1 in mouse brain, rat brain lysates using OTX1 antibody.



Western blot analysis of Otx1 in HeLa, A549, HL-60 lysates using Otx1 antibody.

This product is suitable for in-vitro studies under the RESEARCH USE ONLY [RUO] licence. This product must not be used as for diagnostic or other medical purposes.
St John's Laboratory Ltd, Knowledge Dock Business Centre, University Way, London, E16 2RD | Tel: 0208 223 3081