

Anti-NPC2 antibody (20-151 aa) [R07-0C8] (STJA0012496)

STJA0012496

GENERAL INFORMATION

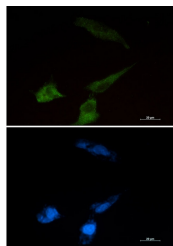
Product Type	Primary antibodies
Short Description	Rabbit monoclonal antibody anti-Niemann Pick C2 (20-151 aa) is suitable for use in Western Blot, Immunohistochemistry, Immunocytochemistry and Immunofluorescence research applications.
Applications	WB/IHC-F/IHC-P/ICC/IF
Host/Source	Rabbit
Reactivity	Human/Mouse/Rat

PRODUCT PROPERTIES

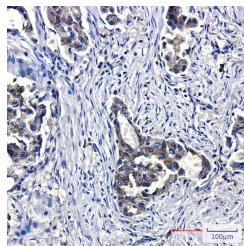
Clonality	Monoclonal
Clone ID	R07-0C8
Concentration	0.3 mg/ml
Conjugation	Unconjugated
Purification	Affinity Purified
Dilution Range	WB 1:500-1:1000 IHC 1:50-1:100 IF 1:50-1:200
Formulation	50mM Tris-Glycine (pH7.4) , 0.15M NaCl, 40% Glycerol, 0.01% Sodium azide and 0.05% BSA
Isotype	IgG
Storage	Store at 4°C short term. Aliquot and store at -20°C long term. Avoid freeze/thaw cycles.
Instruction	

TARGET INFORMATION

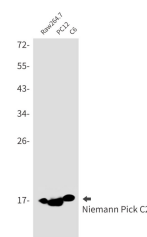
Gene ID	10577
Gene Symbol	NPC2
Uniprot ID	NPC2_HUMAN
Immunogen	Recombinant protein of human Niemann Pick C2
Immunogen Region	20-151 aa
Specificity	
Immunogen Sequence	



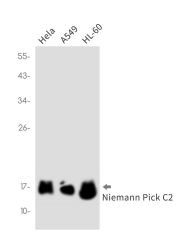
Immunocytochemistry analysis of Niemann Pick C2 (green) in U87-MG cells using Niemann Pick C2 antibody, and DAPI (blue).



Immunohistochemistry analysis of paraffin-embedded Human lung cancer using Niemann Pick C2 antibody. High-pressure and temperature Sodium Citrate pH 6.0 was used for antigen retrieval.



Western blot analysis of Niemann Pick C2 in Raw264.7, PC-12, C6 lysates using Niemann Pick C2 antibody.



Western blot analysis of Niemann Pick C2 in HeLa, A549, HL-60 lysates using Niemann Pick C2 antibody.

This product is suitable for in-vitro studies under the RESEARCH USE ONLY [RUO] licence. This product must not be used as for diagnostic or other medical purposes.
St John's Laboratory Ltd, Knowledge Dock Business Centre, University Way, London, E16 2RD | Tel: 0208 223 3081