

## Anti-MTDH antibody (214-440 aa) [R05-5G3] (STJA0012454)

STJA0012454

### GENERAL INFORMATION

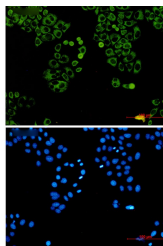
|                          |  |
|--------------------------|--|
| <b>Product Type</b>      | Primary antibodies   |
| <b>Short Description</b> | Rabbit monoclonal antibody anti-LYRIC (214-440 aa) is suitable for use in Western Blot, Immunohistochemistry, Immunocytochemistry, Immunofluorescence and Immunoprecipitation research applications. |
| <b>Applications</b>      | WB/IHC-F/IHC-P/ICC/IF/IP   |
| <b>Host/Source</b>       | Rabbit   |
| <b>Reactivity</b>        | Human  |

### PRODUCT PROPERTIES

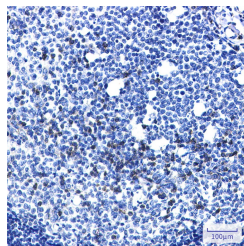
|                            |  |
|----------------------------|--|
| <b>Clonality</b>           | Monoclonal   |
| <b>Clone ID</b>            | R05-5G3  |
| <b>Concentration</b>       | 0.3 mg/ml  |
| <b>Conjugation</b>         | Unconjugated   |
| <b>Purification</b>        | Affinity Purified  |
| <b>Dilution</b>            | WB 1:500-1:1000  |
| <b>Range</b>               | IHC 1:50-1:100<br>IF 1:50-1:200<br>IP 1:20   |
| <b>Formulation</b>         | 50mM Tris-Glycine (pH7.4) , 0.15M NaCl, 40% Glycerol, 0.01% Sodium azide and 0.05% BSA   |
| <b>Isotype</b>             | IgG  |
| <b>Storage Instruction</b> | Store at 4°C short term. Aliquot and store at -20°C long term. Avoid freeze/thaw cycles. |

### TARGET INFORMATION

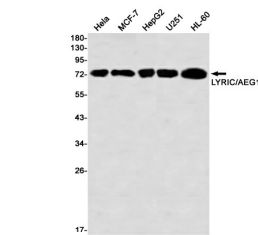
|                           |   |
|---------------------------|---|
| <b>Gene ID</b>            | 92140                                   |
| <b>Gene Symbol</b>        | MTDH                                    |
| <b>Uniprot ID</b>         | LYRIC_HUMAN                             |
| <b>Immunogen</b>          | Recombinant protein of human LYRIC/AEG1 |
| <b>Immunogen Region</b>   | 214-440 aa                              |
| <b>Specificity</b>        |   |
| <b>Immunogen Sequence</b> |   |



Immunocytochemistry analysis of LYRIC (green) in HeLa using LYRIC antibody, and DAPI (blue).



Immunohistochemistry analysis of paraffin-embedded Human tonsil using LYRIC/AEG1 antibody. High-pressure and temperature Sodium Citrate pH 6.0 was used for antigen retrieval.



Western blot analysis of LYRIC/AEG1 in HeLa, MCF-7, HepG2, U251, HL-60 lysates using LYRIC/AEG1 antibody.

This product is suitable for in-vitro studies under the RESEARCH USE ONLY [RUO] licence. This product must not be used as for diagnostic or other medical purposes.  
St John's Laboratory Ltd, Knowledge Dock Business Centre, University Way, London, E16 2RD | Tel: 0208 223 3081