

Anti-L1RE1 antibody (157-330 aa) [R01-0H7] (STJA0012449)

STJA0012449

GENERAL INFORMATION

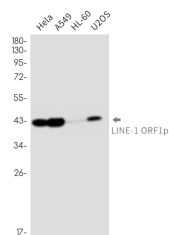
Product Type	Primary antibodies
Short Description	Rabbit monoclonal antibody anti-LINE 1 ORF1p (157-330 aa) is suitable for use in Western Blot and Immunoprecipitation research applications.
Applications	WB/IP
Host/Source	Rabbit
Reactivity	Human

PRODUCT PROPERTIES

Clonality	Monoclonal
Clone ID	R01-0H7
Concentration	0.3 mg/ml
Conjugation	Unconjugated
Purification	Affinity Purified
Dilution Range	WB 1:500-1:1000 IP 1:20
Formulation	50mM Tris-Glycine (pH7.4) , 0.15M NaCl, 40% Glycerol, 0.01% Sodium azide and 0.05% BSA
Isotype	IgG
Storage Instruction	Store at 4°C short term. Aliquot and store at -20°C long term. Avoid freeze/thaw cycles.

TARGET INFORMATION

Gene ID	
Gene Symbol	L1RE1
Uniprot ID	LORF1_HUMAN
Immunogen	Recombinant protein of human LINE-1 ORF1p
Immunogen Region	157-330 aa
Specificity	
Immunogen Sequence	



Western blot analysis of LINE1 ORF1p in HeLa, A549, HL-60, U2OS lysates using LINE 1 ORF1p antibody.

This product is suitable for in-vitro studies under the RESEARCH USE ONLY [RUO] licence. This product must not be used as for diagnostic or other medical purposes.
St John's Laboratory Ltd, Knowledge Dock Business Centre, University Way, London, E16 2RD | Tel: 0208 223 3081