

Anti-LGI1 antibody (203-216 aa) [R01-1H2] (STJA0012446)

STJA0012446

GENERAL INFORMATION

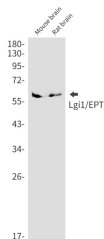
| | |
|--------------------------|--|
| Product Type | Primary antibodies |
| Short Description | Rabbit monoclonal antibody anti-LGI1 (203-216 aa) is suitable for use in Western Blot and Immunoprecipitation research applications. |
| Applications | WB/IP |
| Host/Source | Rabbit |
| Reactivity | Human/Mouse/Rat |

PRODUCT PROPERTIES

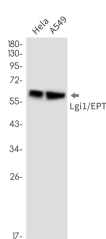
| | |
|----------------------------|--|
| Clonality | Monoclonal |
| Clone ID | R01-1H2 |
| Concentration | 0.3 mg/ml |
| Conjugation | Unconjugated |
| Purification | Affinity Purified |
| Dilution Range | WB 1:500-1:1000 IP 1:20 |
| Formulation | 50mM Tris-Glycine (pH7.4) , 0.15M NaCl, 40% Glycerol, 0.01% Sodium azide and 0.05% BSA |
| Isotype | IgG |
| Storage Instruction | Store at 4°C short term. Aliquot and store at -20°C long term. Avoid freeze/thaw cycles. |

TARGET INFORMATION

| | |
|---------------------------|---------------------------------------|
| Gene ID | 9211 |
| Gene Symbol | LGI1 |
| Uniprot ID | LGI1_HUMAN |
| Immunogen | A synthetic peptide of human Lgi1/EPT |
| Immunogen Region | 203-216 aa |
| Specificity | |
| Immunogen Sequence | |



Western blot analysis of Lgi1/EPT in mouse brain, rat brain lysates using LGI1 antibody.



Western blot analysis of Lgi1/EPT in HeLa, A549 lysates using Lgi1/EPT antibody.

This product is suitable for in-vitro studies under the RESEARCH USE ONLY [RUO] licence. This product must not be used as for diagnostic or other medical purposes.
St John's Laboratory Ltd, Knowledge Dock Business Centre, University Way, London, E16 2RD | Tel: 0208 223 3081