

Anti-KEAP1 antibody (321-609 aa) [R02-1H7] (STJA0012438)

STJA0012438

GENERAL INFORMATION

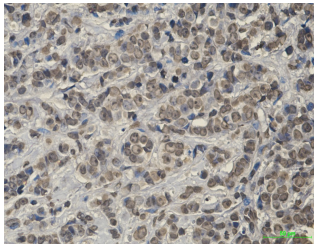
Product Type	Primary antibodies
Short Description	Rabbit monoclonal antibody anti-Keap1 (321-609 aa) is suitable for use in Western Blot and Immunohistochemistry research applications.
Applications	WB/IHC-P
Host/Source	Rabbit
Reactivity	Human/Mouse

PRODUCT PROPERTIES

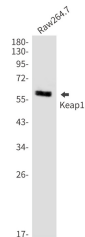
Clonality	Monoclonal
Clone ID	R02-1H7
Concentration	0.3 mg/ml
Conjugation	Unconjugated
Purification	Affinity Purified
Dilution Range	WB 1:500-1:1000 IHC 1:50-1:100
Formulation	50mM Tris-Glycine (pH7.4) , 0.15M NaCl, 40% Glycerol, 0.01% Sodium azide and 0.05% BSA
Isotype	IgG
Storage Instruction	Store at 4°C short term. Aliquot and store at -20°C long term. Avoid freeze/thaw cycles.

TARGET INFORMATION

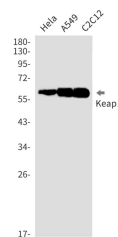
Gene ID	9817
Gene Symbol	KEAP1
Uniprot ID	KEAP1_HUMAN
Immunogen	Recombinant protein of human Keap1
Immunogen Region	321-609 aa
Specificity	
Immunogen Sequence	



Immunohistochemistry analysis of paraffin-embedded Human breast cancer using Keap1 antibody. High-pressure and temperature Sodium Citrate pH 6.0 was used for antigen retrieval.



Western blot analysis of Keap1 in Raw264.7 lysates using Keap1 antibody.



Western blot analysis of Keap1 in HeLa, A549, C2C12 lysates using Keap1 antibody.