

Anti-IMPDH2 antibody (140-154 aa) [R06-1B8] (STJA0012430)

STJA0012430

GENERAL INFORMATION

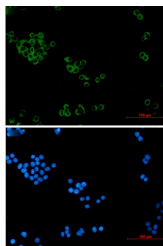
Product Type	Primary antibodies
Short Description	Rabbit monoclonal antibody anti-IMPDH2 (140-154 aa) is suitable for use in Western Blot, Immunohistochemistry, Immunocytochemistry, Immunofluorescence and Immunoprecipitation research applications.
Applications	WB/IHC-F/IHC-P/ICC/IF/IP
Host/Source	Rabbit
Reactivity	Human/Mouse/Rat

PRODUCT PROPERTIES

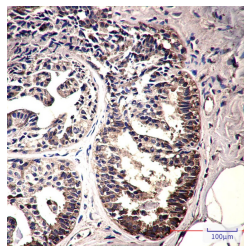
Clonality	Monoclonal
Clone ID	R06-1B8
Concentration	0.3 mg/ml
Conjugation	Unconjugated
Purification	Affinity Purified
Dilution	WB 1:500-1:1000
Range	IHC 1:50-1:100 IF 1:50-1:200 IP 1:20
Formulation	50mM Tris-Glycine (pH7.4) , 0.15M NaCl, 40% Glycerol, 0.01% Sodium azide and 0.05% BSA
Isotype	IgG
Storage	Store at 4°C short term. Aliquot and store at -20°C long term. Avoid freeze/thaw cycles.
Instruction	

TARGET INFORMATION

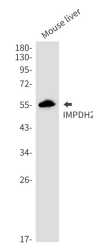
Gene ID	3615
Gene Symbol	IMPDH2
Uniprot ID	IMDH2_HUMAN
Immunogen	A synthetic peptide of human IMPDH2
Immunogen Region	140-154 aa
Specificity	
Immunogen Sequence	



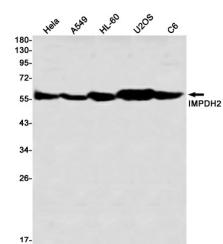
Immunocytochemistry analysis of IMPDH2 (green) in HeLa using IMPDH2 antibody, and DAPI (blue).



Immunohistochemistry analysis of paraffin-embedded Human breast cancer using IMPDH2 antibody. High-pressure and temperature Sodium Citrate pH 6.0 was used for antigen retrieval.



Western blot analysis of IMPDH2 in 3T3, mouse liver lysates using IMPDH2 antibody.



Western blot analysis of IMPDH2 in HeLa, A549, HL-60, U2OS, C6 lysates using IMPDH2 antibody.