

## Anti-Icam2 antibody (23-222 aa) [R06-7A3] (STJA0012421)

STJA0012421

### GENERAL INFORMATION

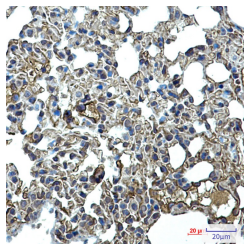
<b>Product Type</b>	Primary antibodies
<b>Short Description</b>	Rabbit monoclonal antibody anti-ICAM2 (23-222 aa) is suitable for use in Western Blot, Immunohistochemistry and Immunoprecipitation research applications.
<b>Applications</b>	WB/IHC-P/IP
<b>Host/Source</b>	Rabbit
<b>Reactivity</b>	Human/Mouse

### PRODUCT PROPERTIES

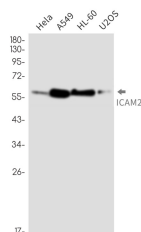
<b>Clonality</b>	Monoclonal
<b>Clone ID</b>	R06-7A3
<b>Concentration</b>	0.3 mg/ml
<b>Conjugation</b>	Unconjugated
<b>Purification</b>	Affinity Purified
<b>Dilution Range</b>	WB 1:500-1:1000 IHC 1:50-1:100 IP 1:20
<b>Formulation</b>	50mM Tris-Glycine (pH7.4) , 0.15M NaCl, 40% Glycerol, 0.01% Sodium azide and 0.05% BSA
<b>Isotype</b>	IgG
<b>Storage</b>	Store at 4°C short term. Aliquot and store at -20°C long term. Avoid freeze/thaw cycles.
<b>Instruction</b>	

### TARGET INFORMATION

<b>Gene ID</b>	15896
<b>Gene Symbol</b>	Icam2
<b>Uniprot ID</b>	ICAM2_MOUSE
<b>Immunogen</b>	Recombinant protein of mouse ICAM2
<b>Immunogen Region</b>	23-222 aa
<b>Specificity</b>	
<b>Immunogen Sequence</b>	



Immunohistochemistry analysis of paraffin-embedded mouse lung using ICAM2 antibody. High-pressure and temperature Sodium Citrate pH 6.0 was used for antigen retrieval.



Western blot analysis of ICAM2 in HeLa, A549, HL-60, U2OS lysates using ICAM2 antibody.