

Anti-HINT1 antibody (5-18 aa) [R08-0E8] (STJA0012408)

STJA0012408

GENERAL INFORMATION

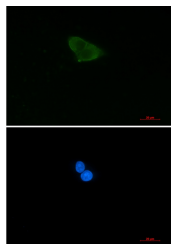
Product Type	Primary antibodies
Short Description	Rabbit monoclonal antibody anti-HINT1 (5-18 aa) is suitable for use in Western Blot, Immunocytochemistry, Immunofluorescence and Immunoprecipitation research applications.
Applications	WB/ICC/IF/IP
Host/Source	Rabbit
Reactivity	Human

PRODUCT PROPERTIES

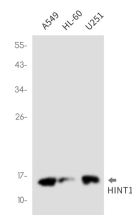
Clonality	Monoclonal
Clone ID	R08-0E8
Concentration	0.3 mg/ml
Conjugation	Unconjugated
Purification	Affinity Purified
Dilution Range	WB 1:500-1:1000 IF 1:50-1:200 IP 1:20
Formulation	50mM Tris-Glycine (pH7.4) , 0.15M NaCl, 40% Glycerol, 0.01% Sodium azide and 0.05% BSA
Isotype	IgG
Storage	Store at 4°C short term. Aliquot and store at -20°C long term. Avoid freeze/thaw cycles.
Instruction	

TARGET INFORMATION

Gene ID	3094
Gene Symbol	HINT1
Uniprot ID	HINT1_HUMAN
Immunogen	A synthetic peptide of human HINT1
Immunogen Region	5-18 aa
Specificity	
Immunogen Sequence	



Immunocytochemistry analysis of HINT1 (green) in HeLa using HINT1 antibody, and DAPI (blue).



Western blot analysis of HINT1 in A549, HL-60, U251 lysates using HINT1 antibody.

This product is suitable for in-vitro studies under the RESEARCH USE ONLY [RUO] licence. This product must not be used as for diagnostic or other medical purposes.
St John's Laboratory Ltd, Knowledge Dock Business Centre, University Way, London, E16 2RD | Tel: 0208 223 3081