

## Anti-EPS15L1 antibody (2-15 aa) [R05-8A0] (STJA0012365)

STJA0012365

### GENERAL INFORMATION

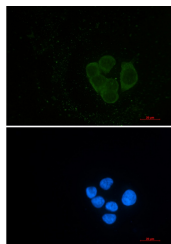
<b>Product Type</b>	Primary antibodies
<b>Short Description</b>	Rabbit monoclonal antibody anti-EPS15R (2-15 aa) is suitable for use in Western Blot, Immunocytochemistry and Immunofluorescence research applications.
<b>Applications</b>	WB/ICC/IF
<b>Host/Source</b>	Rabbit
<b>Reactivity</b>	Human

### PRODUCT PROPERTIES

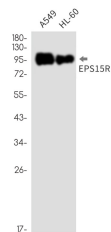
<b>Clonality</b>	Monoclonal
<b>Clone ID</b>	R05-8A0
<b>Concentration</b>	0.3 mg/ml
<b>Conjugation</b>	Unconjugated
<b>Purification</b>	Affinity Purified
<b>Dilution Range</b>	WB 1:500-1:1000 IF 1:50-1:200
<b>Formulation</b>	50mM Tris-Glycine (pH7.4) , 0.15M NaCl, 40% Glycerol, 0.01% Sodium azide and 0.05% BSA
<b>Isotype</b>	IgG
<b>Storage</b>	Store at 4°C short term. Aliquot and store at -20°C long term. Avoid freeze/thaw cycles.
<b>Instruction</b>	

### TARGET INFORMATION

<b>Gene ID</b>	58513
<b>Gene Symbol</b>	EPS15L1
<b>Uniprot ID</b>	EP15R_HUMAN
<b>Immunogen</b>	A synthetic peptide of human EPS15R
<b>Immunogen Region</b>	2-15 aa
<b>Specificity</b>	
<b>Immunogen Sequence</b>	



Immunocytochemistry analysis of EPS15R (green) in HeLa using EPS15R antibody, and DAPI (blue).



Western blot analysis of EPS15R in A549, HL-60 lysates using EPS15R antibody.

This product is suitable for in-vitro studies under the RESEARCH USE ONLY [RUO] licence. This product must not be used as for diagnostic or other medical purposes.  
St John's Laboratory Ltd, Knowledge Dock Business Centre, University Way, London, E16 2RD | Tel: 0208 223 3081