

Anti-EFEMP1 antibody (18-493 aa) [R01-7C7] (STJA0012357)

STJA0012357

GENERAL INFORMATION

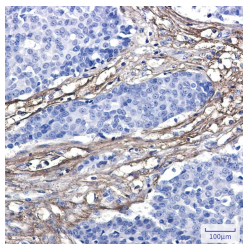
Product Type	Primary antibodies
Short Description	Rabbit monoclonal antibody anti-EFEMP1 (18-493 aa) is suitable for use in Western Blot, Immunohistochemistry and Immunoprecipitation research applications.
Applications	WB/IHC-P/IP
Host/Source	Rabbit
Reactivity	Human

PRODUCT PROPERTIES

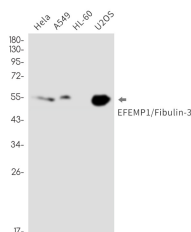
Clonality	Monoclonal
Clone ID	R01-7C7
Concentration	0.3 mg/ml
Conjugation	Unconjugated
Purification	Affinity Purified
Dilution Range	WB 1:500-1:1000 IHC 1:50-1:100 IP 1:20
Formulation	50mM Tris-Glycine (pH7.4) , 0.15M NaCl, 40% Glycerol, 0.01% Sodium azide and 0.05% BSA
Isotype	IgG
Storage	Store at 4°C short term. Aliquot and store at -20°C long term. Avoid freeze/thaw cycles.
Instruction	

TARGET INFORMATION

Gene ID	2202
Gene Symbol	EFEMP1
Uniprot ID	FBLN3_HUMAN
Immunogen	Recombinant protein of human EFEMP1/Fibulin-3
Immunogen Region	18-493 aa
Specificity	
Immunogen Sequence	



Immunohistochemistry analysis of paraffin-embedded human breast cancer using EFEMP1/Fibulin-3 antibody. High-pressure and temperature Sodium Citrate pH 6.0 was used for antigen retrieval.



Western blot analysis of EFEMP1/Fibulin-3 in HeLa, A549, HL-60, U2OS lysates using EFEMP1 antibody.

This product is suitable for in-vitro studies under the RESEARCH USE ONLY [RUO] licence. This product must not be used as for diagnostic or other medical purposes.
St John's Laboratory Ltd, Knowledge Dock Business Centre, University Way, London, E16 2RD | Tel: 0208 223 3081