

Anti-EEF1A1 antibody (325-338 aa) [R04-3H4] (STJA0012354)

STJA0012354

GENERAL INFORMATION

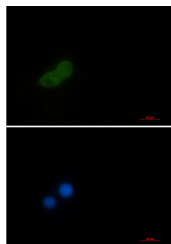
Product Type	Primary antibodies
Short Description	Rabbit monoclonal antibody anti-Elongation Factor 1A1 (325-338 aa) is suitable for use in Western Blot, Immunohistochemistry, Immunocytochemistry and Immunofluorescence research applications.
Applications	WB/IHC-F/IHC-P/ICC/IF
Host/Source	Rabbit
Reactivity	Human/Rat

PRODUCT PROPERTIES

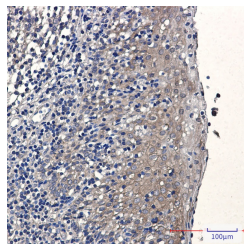
Clonality	Monoclonal
Clone ID	R04-3H4
Concentration	0.3 mg/ml
Conjugation	Unconjugated
Purification	Affinity Purified
Dilution	WB 1:500-1:1000
Range	IHC 1:50-1:100 IF 1:50-1:200
Formulation	50mM Tris-Glycine (pH7.4) , 0.15M NaCl, 40% Glycerol, 0.01% Sodium azide and 0.05% BSA
Isotype	IgG
Storage	Store at 4°C short term. Aliquot and store at -20°C long term. Avoid freeze/thaw cycles.
Instruction	

TARGET INFORMATION

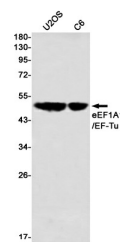
Gene ID	1915
Gene Symbol	EEF1A1
Uniprot ID	EF1A1_HUMAN
Immunogen	A synthetic peptide of human eEF1A1/EF-Tu
Immunogen Region	325-338 aa
Specificity	
Immunogen Sequence	



Immunocytochemistry analysis of Elongation Factor 1A1 (green) in HeLa using Elongation Factor 1A1 antibody, and DAPI (blue).



Immunohistochemistry analysis of paraffin-embedded Human tonsil using eEF1A1/EF-Tu antibody. High-pressure and temperature Sodium Citrate pH 6.0 was used for antigen retrieval.



Western blot analysis of eEF1A1/EF-Tu in U2OS, C6 lysates using eEF1A1/EF-Tu antibody.

This product is suitable for in-vitro studies under the RESEARCH USE ONLY [RUO] licence. This product must not be used as for diagnostic or other medical purposes.
St John's Laboratory Ltd, Knowledge Dock Business Centre, University Way, London, E16 2RD | Tel: 0208 223 3081