

Anti-CLSTN1 antibody (969-981 aa) [R07-8H2] (STJA0012324)

STJA0012324

GENERAL INFORMATION

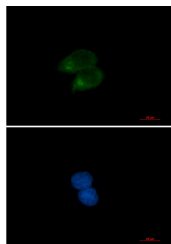
Product Type	Primary antibodies
Short Description	Rabbit monoclonal antibody anti-CLSTN1 (969-981 aa) is suitable for use in Western Blot, Immunohistochemistry, Immunocytochemistry and Immunofluorescence research applications.
Applications	WB/IHC-F/IHC-P/ICC/IF
Host/Source	Rabbit
Reactivity	Human/Mouse/Hamster

PRODUCT PROPERTIES

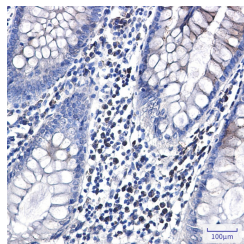
Clonality	Monoclonal
Clone ID	R07-8H2
Concentration	0.3 mg/ml
Conjugation	Unconjugated
Purification	Affinity Purified
Dilution Range	WB 1:500-1:1000 IHC 1:50-1:100 IF 1:50-1:200
Formulation	50mM Tris-Glycine (pH7.4) , 0.15M NaCl, 40% Glycerol, 0.01% Sodium azide and 0.05% BSA
Isotype	IgG
Storage Instruction	Store at 4°C short term. Aliquot and store at -20°C long term. Avoid freeze/thaw cycles.

TARGET INFORMATION

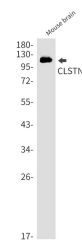
Gene ID	22883
Gene Symbol	CLSTN1
Uniprot ID	CSTN1_HUMAN
Immunogen	A synthetic peptide of human CLSTN1
Immunogen Region	969-981 aa
Specificity	Immunogen
Sequence	



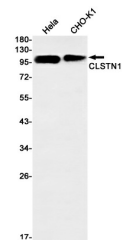
Immunocytochemistry analysis of CLSTN1 (green) in HeLa using CLSTN1 antibody, and DAPI (blue).



Immunohistochemistry analysis of paraffin-embedded Human colon cancer using CLSTN1 antibody. High-pressure and temperature Sodium Citrate pH 6.0 was used for antigen retrieval.



Western blot analysis of CLSTN1 in mouse brain lysates using CLSTN1 antibody.



Western blot analysis of CLSTN1 in HeLa, CHO-K1 lysates using CLSTN1 antibody