

Anti-CLPX antibody (621-633 aa) [R05-2A6] (STJA0012323)

STJA0012323

GENERAL INFORMATION

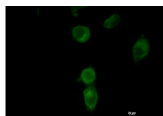
Product Type	Primary antibodies
Short Description	Rabbit monoclonal antibody anti-CLPX (621-633 aa) is suitable for use in Western Blot, Immunocytochemistry and Immunofluorescence research applications.
Applications	WB/ICC/IF
Host/Source	Rabbit
Reactivity	Human/Mouse/Rat/Hamster

PRODUCT PROPERTIES

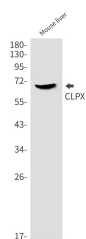
Clonality	Monoclonal
Clone ID	R05-2A6
Concentration	0.3 mg/ml
Conjugation	Unconjugated
Purification	Affinity Purified
Dilution Range	WB 1:500-1:1000 IF 1:50-1:200
Formulation	50mM Tris-Glycine (pH7.4) , 0.15M NaCl, 40% Glycerol, 0.01% Sodium azide and 0.05% BSA
Isotype	IgG
Storage	Store at 4°C short term. Aliquot and store at -20°C long term. Avoid freeze/thaw cycles.
Instruction	

TARGET INFORMATION

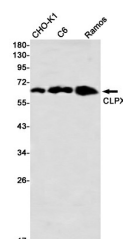
Gene ID	10845
Gene Symbol	CLPX
Uniprot ID	CLPX_HUMAN
Immunogen	A synthetic peptide of human CLPX
Immunogen Region	621-633 aa
Specificity	
Immunogen Sequence	



Immunocytochemistry analysis of CLPX (green) in HT-1080 using CLPX antibody, and DAPI (blue).



Western blot analysis of CLPX in mouse liver lysates using CLPX antibody.



Western blot analysis of CLPX in CHO-K1, C6, Ramos lysates using CLPX antibody.

This product is suitable for in-vitro studies under the RESEARCH USE ONLY [RUO] licence. This product must not be used as for diagnostic or other medical purposes.
St John's Laboratory Ltd, Knowledge Dock Business Centre, University Way, London, E16 2RD | Tel: 0208 223 3081