

Anti-ATP6V1A antibody (475-617 aa) [R03-5H1] (STJA0012278)

STJA0012278

GENERAL INFORMATION

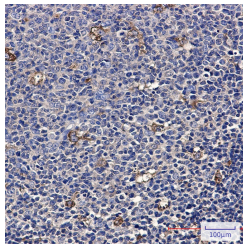
Product Type	Primary antibodies
Short Description	Rabbit monoclonal antibody anti-ATP6V1A (475-617 aa) is suitable for use in Western Blot, Immunohistochemistry and Immunoprecipitation research applications.
Applications	WB/IHC-P/IP
Host/Source	Rabbit
Reactivity	Human/Mouse/Rat

PRODUCT PROPERTIES

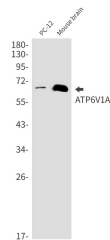
Clonality	Monoclonal
Clone ID	R03-5H1
Concentration	0.3 mg/ml
Conjugation	Unconjugated
Purification	Affinity Purified
Dilution Range	WB 1:500-1:1000 IHC 1:50-1:100 IP 1:20
Formulation	50mM Tris-Glycine (pH7.4) , 0.15M NaCl, 40% Glycerol, 0.01% Sodium azide and 0.05% BSA
Isotype	IgG
Storage	Store at 4°C short term. Aliquot and store at -20°C long term. Avoid freeze/thaw cycles.
Instruction	

TARGET INFORMATION

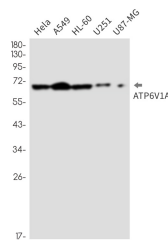
Gene ID	523
Gene Symbol	ATP6V1A
Uniprot ID	VATA_HUMAN
Immunogen	Recombinant protein of human ATP6V1A
Immunogen Region	475-617 aa
Specificity	
Immunogen Sequence	



Immunohistochemistry analysis of paraffin-embedded Human tonsil using ATP6V1A antibody. High-pressure and temperature Sodium Citrate pH 6.0 was used for antigen retrieval.



Western blot analysis of ATP6V1A in PC-12, mouse brain lysates using ATP6V1A antibody.



Western blot analysis of ATP6V1A in HeLa, A549, HL-60, U251, U87-MG lysates using ATP6V1A antibody.