

Anti-POLR2A antibody (1602-1610 aa) [R06-8G7] (STJA0012190)

STJA0012190

GENERAL INFORMATION

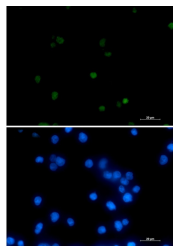
Product Type	Primary antibodies
Short Description	Rabbit monoclonal antibody anti-RNA Polymerase II Subunit B1 (1602-1610 aa) is suitable for use in Western Blot, Immunohistochemistry, Immunocytochemistry, Immunofluorescence and Immunoprecipitation research applications.
Applications	WB/IHC-F/IHC-P/ICC/IF/IP
Host/Source	Rabbit
Reactivity	Human

PRODUCT PROPERTIES

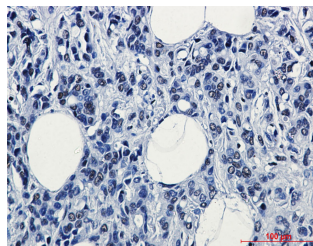
Clonality	Monoclonal
Clone ID	R06-8G7
Concentration	0.3 mg/ml
Conjugation	Unconjugated
Purification	Affinity Purified
Dilution	WB 1:500-1:1000
Range	IHC 1:50-1:100 IF 1:50-1:200 IP 1:20
Formulation	50mM Tris-Glycine (pH7.4) , 0.15M NaCl, 40% Glycerol, 0.01% Sodium azide and 0.05% BSA
Isotype	IgG
Storage Instruction	Store at 4°C short term. Aliquot and store at -20°C long term. Avoid freeze/thaw cycles.

TARGET INFORMATION

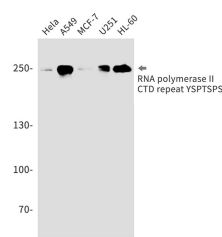
Gene ID	5430
Gene Symbol	POLR2A
Uniprot ID	RPB1_HUMAN
Immunogen	A synthetic peptide of human RNA polymerase II CTD repeat YSPTSPS
Immunogen Region	1602-1610 aa
Specificity	
Immunogen Sequence	



Immunocytochemistry analysis of RNA Polymerase II Subunit B1 (green) in CEM using RNA Polymerase II Subunit B1 antibody, and DAPI (blue).



Immunohistochemistry analysis of paraffin-embedded Human breast cancer tissue using RNA polymerase II CTD repeat YSPTSPS antibody. High-pressure and temperature Sodium Citrate pH 6.0 was used for antigen retrieval.



Western blot analysis of RNA polymerase II CTD repeat YSPTSPS in HeLa, A549, MCF-7, U251, HL-60 lysates using RNA polymerase II CTD repeat YSPTSPS antibody.