

Anti-SPP1 antibody (287-300 aa) [R08-1C5] (STJA0012170)

STJA0012170

GENERAL INFORMATION

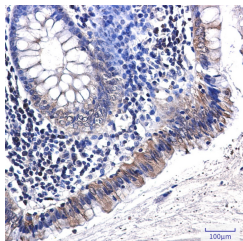
Product Type	Primary antibodies
Short Description	Rabbit monoclonal antibody anti-Osteopontin (287-300 aa) is suitable for use in Western Blot and Immunohistochemistry research applications.
Applications	WB/IHC-P
Host/Source	Rabbit
Reactivity	Human/Hamster/Rat

PRODUCT PROPERTIES

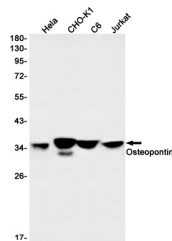
Clonality	Monoclonal
Clone ID	R08-1C5
Concentration	0.3 mg/ml
Conjugation	Unconjugated
Purification	Affinity Purified
Dilution Range	WB 1:500-1:1000 IHC 1:50-1:100
Formulation	50mM Tris-Glycine (pH7.4) , 0.15M NaCl, 40% Glycerol, 0.01% Sodium azide and 0.05% BSA
Isotype	IgG
Storage Instruction	Store at 4°C short term. Aliquot and store at -20°C long term. Avoid freeze/thaw cycles.

TARGET INFORMATION

Gene ID	6696
Gene Symbol	SPP1
Uniprot ID	OSTP_HUMAN
Immunogen	A synthetic peptide of human Osteopontin
Immunogen Region	287-300 aa
Specificity	
Immunogen Sequence	



Immunohistochemistry analysis of paraffin-embedded Human colon cancer using Osteopontin antibody. High-pressure and temperature Sodium Citrate pH 6.0 was used for antigen retrieval.



Western blot analysis of Osteopontin in Hela, CHO-K1, C6, Jurkat lysates using Osteopontin antibody.

This product is suitable for in-vitro studies under the RESEARCH USE ONLY [RUO] licence. This product must not be used as for diagnostic or other medical purposes.
St John's Laboratory Ltd, Knowledge Dock Business Centre, University Way, London, E16 2RD | Tel: 0208 223 3081