

Anti-SURF4 antibody (144-157 aa) [R07-1F1] (STJA0012159)

STJA0012159

GENERAL INFORMATION

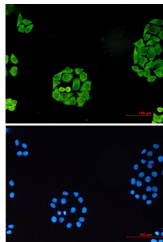
Product Type	Primary antibodies
Short Description	Rabbit monoclonal antibody anti-Surfett Locus Protein 4 (144-157 aa) is suitable for use in Western Blot, Immunocytochemistry and Immunofluorescence research applications.
Applications	WB/ICC/IF
Host/Source	Rabbit
Reactivity	Human/Mouse/Rat

PRODUCT PROPERTIES

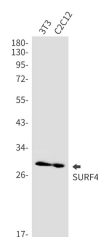
Clonality	Monoclonal
Clone ID	R07-1F1
Concentration	0.3 mg/ml
Conjugation	Unconjugated
Purification	Affinity Purified
Dilution Range	WB 1:500-1:1000 IF 1:50-1:200
Formulation	50mM Tris-Glycine (pH7.4) , 0.15M NaCl, 40% Glycerol, 0.01% Sodium azide and 0.05% BSA
Isotype	IgG
Storage	Store at 4°C short term. Aliquot and store at -20°C long term. Avoid freeze/thaw cycles.
Instruction	

TARGET INFORMATION

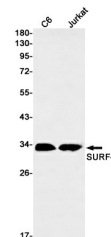
Gene ID	6836
Gene Symbol	SURF4
Uniprot ID	SURF4_HUMAN
Immunogen	A synthetic peptide of human SURF4
Immunogen Region	144-157 aa
Specificity	
Immunogen Sequence	



Immunocytochemistry analysis of SURF4 (green) in Hela cells using SURF4 antibody, and DAPI (blue)



Western blot analysis of SURF4 in 3T3, C2C12 lysates using Surfett Locus Protein 4 antibody.



Western blot analysis of SURF4 in C6, Jurkat lysates using SURF4 antibody.

This product is suitable for in-vitro studies under the RESEARCH USE ONLY [RUO] licence. This product must not be used as for diagnostic or other medical purposes.
St John's Laboratory Ltd, Knowledge Dock Business Centre, University Way, London, E16 2RD | Tel: 0208 223 3081