

## Anti-YBX1 antibody (288-301 aa) [R03-6G4] (STJA0012148)

STJA0012148

### GENERAL INFORMATION

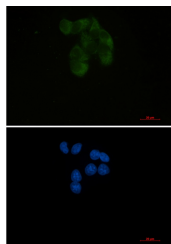
<b>Product Type</b>	Primary antibodies
<b>Short Description</b>	Rabbit monoclonal antibody anti-YB1 (288-301 aa) is suitable for use in Western Blot, Immunohistochemistry, Immunocytochemistry, Immunofluorescence and Immunoprecipitation research applications.
<b>Applications</b>	WB/IHC-F/IHC-P/ICC/IF/IP
<b>Host/Source</b>	Rabbit
<b>Reactivity</b>	Human/Mouse/Hamster

### PRODUCT PROPERTIES

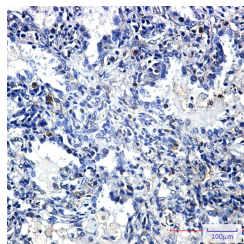
<b>Clonality</b>	Monoclonal
<b>Clone ID</b>	R03-6G4
<b>Concentration</b>	0.3 mg/ml
<b>Conjugation</b>	Unconjugated
<b>Purification</b>	Affinity Purified
<b>Dilution</b>	WB 1:500-1:1000
<b>Range</b>	IHC 1:50-1:100 IF 1:50-1:200 IP 1:20
<b>Formulation</b>	50mM Tris-Glycine (pH7.4) , 0.15M NaCl, 40% Glycerol, 0.01% Sodium azide and 0.05% BSA
<b>Isotype</b>	IgG
<b>Storage Instruction</b>	Store at 4°C short term. Aliquot and store at -20°C long term. Avoid freeze/thaw cycles.

### TARGET INFORMATION

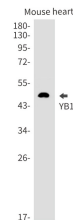
<b>Gene ID</b>	4904
<b>Gene Symbol</b>	YBX1
<b>Uniprot ID</b>	YBOX1_HUMAN
<b>Immunogen</b>	A synthetic peptide of human YB1
<b>Immunogen Region</b>	288-301 aa
<b>Specificity</b>	
<b>Immunogen Sequence</b>	



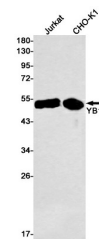
Immunocytochemistry analysis of YB1 (green) in HeLa using YB1 antibody, and DAPI (blue).



Immunohistochemistry analysis of paraffin-embedded Human lung cancer using YB1 antibody. High-pressure and temperature Sodium Citrate pH 6.0 was used for antigen retrieval.



Western blot analysis of YB1 in mouse heart lysates using YB1 antibody.



Western blot analysis of YB1 in Jurkat, HeLa lysates using YB1 antibody