

Anti-FIS1 antibody (8-21 aa) [R02-8G8] (STJA0012090)

STJA0012090

GENERAL INFORMATION

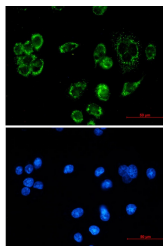
Product Type	Primary antibodies
Short Description	Rabbit monoclonal antibody anti-Mitochondrial Fission 1 Protein (8-21 aa) is suitable for use in Western Blot, Immunohistochemistry, Immunocytochemistry and Immunofluorescence research applications.
Applications	WB/IHC-F/IHC-P/ICC/IF
Host/Source	Rabbit
Reactivity	Human

PRODUCT PROPERTIES

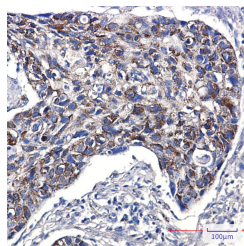
Clonality	Monoclonal
Clone ID	R02-8G8
Concentration	0.3 mg/ml
Conjugation	Unconjugated
Purification	Affinity Purified
Dilution	WB 1:500-1:1000
Range	IHC 1:50-1:100 IF 1:50-1:200
Formulation	50mM Tris-Glycine (pH7.4) , 0.15M NaCl, 40% Glycerol, 0.01% Sodium azide and 0.05% BSA
Isotype	IgG
Storage	Store at 4°C short term. Aliquot and store at -20°C long term. Avoid freeze/thaw cycles.
Instruction	

TARGET INFORMATION

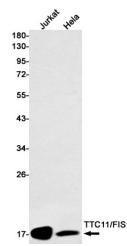
Gene ID	51024
Gene Symbol	FIS1
Uniprot ID	FIS1_HUMAN
Immunogen	A synthetic peptide of human TTC11
Immunogen Region	8-21 aa
Specificity	
Immunogen Sequence	



Immunocytochemistry analysis of TTC11/FIS1 (green) in MCF-7 using TTC11/FIS1 antibody, and DAPI (blue)



Immunohistochemistry analysis of paraffin-embedded Human lung cancer using TTC11 antibody. High-pressure and temperature Sodium Citrate pH 6.0 was used for antigen retrieval.



Western blot analysis of TTC11/FIS1 in Jurkat, HeLa lysates using Mitochondrial Fission 1 Protein antibody.