

Anti-TOP1 antibody (2-15 aa) [R02-2H9] (STJA0012067)

STJA0012067

GENERAL INFORMATION

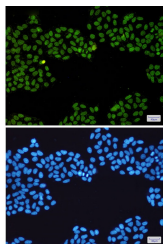
Product Type	Primary antibodies
Short Description	Rabbit monoclonal antibody anti-Topoisomerase I (2-15 aa) is suitable for use in Western Blot, Immunohistochemistry, Immunocytochemistry and Immunofluorescence research applications.
Applications	WB/IHC-F/IHC-P/ICC/IF
Host/Source	Rabbit
Reactivity	Human/Mouse/Rat

PRODUCT PROPERTIES

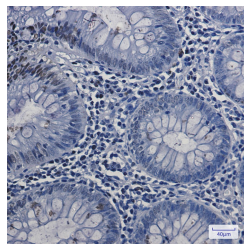
Clonality	Monoclonal
Clone ID	R02-2H9
Concentration	0.3 mg/ml
Conjugation	Unconjugated
Purification	Affinity Purified
Dilution Range	WB 1:500-1:1000 IHC 1:50-1:100 IF 1:50-1:200
Formulation	50mM Tris-Glycine (pH7.4) , 0.15M NaCl, 40% Glycerol, 0.01% Sodium azide and 0.05% BSA
Isotype	IgG
Storage	Store at 4°C short term. Aliquot and store at -20°C long term. Avoid freeze/thaw cycles.
Instruction	

TARGET INFORMATION

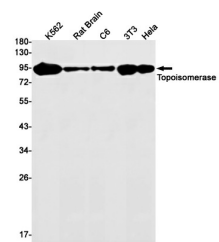
Gene ID	7150
Gene Symbol	TOP1
Uniprot ID	TOP1_HUMAN
Immunogen	A synthetic peptide of human Topoisomerase I
Immunogen Region	2-15 aa
Specificity	
Immunogen Sequence	



Immunocytochemistry analysis of Topoisomerase I (green) in HeLa using Topoisomerase I antibody, and DAPI (blue)



Immunohistochemistry analysis of paraffin-embedded Human colon cancer using Topoisomerase I antibody. High-pressure and temperature Sodium Citrate pH 6.0 was used for antigen retrieval.



Western blot analysis of Topoisomerase I in K562, rat Brain, C6, 3T3, HeLa lysates using Topoisomerase I antibody.