

Anti-CLEC3B antibody (175-189 aa) [R08-4I2] (STJA0012047)

STJA0012047

GENERAL INFORMATION

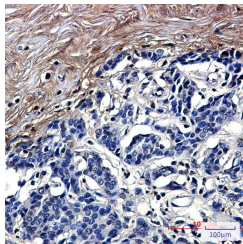
Product Type	Primary antibodies
Short Description	Rabbit monoclonal antibody anti-Tetranectin (175-189 aa) is suitable for use in Western Blot, Immunohistochemistry and Immunoprecipitation research applications.
Applications	WB/IHC-P/IP
Host/Source	Rabbit
Reactivity	Human/Mouse

PRODUCT PROPERTIES

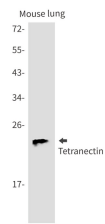
Clonality	Monoclonal
Clone ID	R08-4I2
Concentration	0.3 mg/ml
Conjugation	Unconjugated
Purification	Affinity Purified
Dilution Range	WB 1:500-1:1000 IHC 1:50-1:100 IP 1:20
Formulation	50mM Tris-Glycine (pH7.4) , 0.15M NaCl, 40% Glycerol, 0.01% Sodium azide and 0.05% BSA
Isotype	IgG
Storage Instruction	Store at 4°C short term. Aliquot and store at -20°C long term. Avoid freeze/thaw cycles.

TARGET INFORMATION

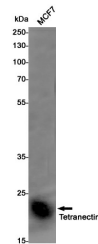
Gene ID	7123
Gene Symbol	CLEC3B
Uniprot ID	TETN_HUMAN
Immunogen	A synthetic peptide of human Tetranectin
Immunogen Region	175-189 aa
Specificity	
Immunogen Sequence	



Immunohistochemistry analysis of paraffin-embedded Human breast cancer using Tetranectin antibody. High-pressure and temperature Sodium Citrate pH 6.0 was used for antigen retrieval.



Western blot analysis of Tetranectin in mouse lung lysates using Tetranectin antibody.



Western blot analysis of Tetranectin in MCF-7 lysates using Tetranectin antibody.