

Anti-SUN1 antibody (141-154 aa) [R05-9D5] (STJA0012013)

STJA0012013

GENERAL INFORMATION

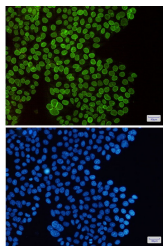
Product Type	Primary antibodies
Short Description	Rabbit monoclonal antibody anti-SUN1 (141-154 aa) is suitable for use in Western Blot, Immunohistochemistry, Immunocytochemistry and Immunofluorescence research applications.
Applications	WB/IHC-F/IHC-P/ICC/IF
Host/Source	Rabbit
Reactivity	Human

PRODUCT PROPERTIES

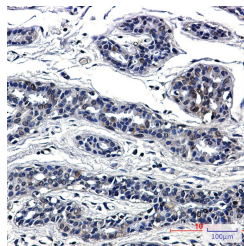
Clonality	Monoclonal
Clone ID	R05-9D5
Concentration	0.3 mg/ml
Conjugation	Unconjugated
Purification	Affinity Purified
Dilution Range	WB 1:500-1:1000 IHC 1:50-1:100 IF 1:50-1:200
Formulation	50mM Tris-Glycine (pH7.4) , 0.15M NaCl, 40% Glycerol, 0.01% Sodium azide and 0.05% BSA
Isotype	IgG
Storage	Store at 4°C short term. Aliquot and store at -20°C long term. Avoid freeze/thaw cycles.
Instruction	

TARGET INFORMATION

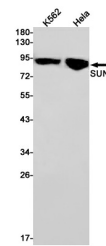
Gene ID	23353
Gene Symbol	SUN1
Uniprot ID	SUN1_HUMAN
Immunogen	A synthetic peptide of human SUN1
Immunogen Region	141-154 aa
Specificity	
Immunogen Sequence	



Immunocytochemistry analysis of SUN1 (green) in Hela using SUN1 antibody, and DAPI (blue)



Immunohistochemistry analysis of paraffin-embedded Human breast cancer using SUN1 antibody. High-pressure and temperature Sodium Citrate pH 6.0 was used for antigen retrieval.



Western blot analysis of SUN1 in K562, Hela lysates using SUN1 antibody.