

Anti-SSX2IP antibody (601-614 aa) [R02-5B6] (STJA0011998)

STJA0011998

GENERAL INFORMATION

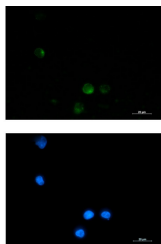
Product Type	Primary antibodies
Short Description	Rabbit monoclonal antibody anti-SSX2IP (601-614 aa) is suitable for use in Western Blot, Immunohistochemistry, Immunocytochemistry and Immunofluorescence research applications.
Applications	WB/IHC-F/IHC-P/ICC/IF
Host/Source	Rabbit
Reactivity	Human/Rat

PRODUCT PROPERTIES

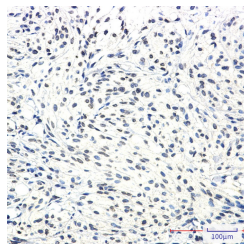
Clonality	Monoclonal
Clone ID	R02-5B6
Concentration	0.3 mg/ml
Conjugation	Unconjugated
Purification	Affinity Purified
Dilution Range	WB 1:500-1:1000 IHC 1:50-1:100 IF 1:50-1:200
Formulation	50mM Tris-Glycine (pH7.4) , 0.15M NaCl, 40% Glycerol, 0.01% Sodium azide and 0.05% BSA
Isotype	IgG
Storage Instruction	Store at 4°C short term. Aliquot and store at -20°C long term. Avoid freeze/thaw cycles.

TARGET INFORMATION

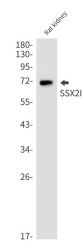
Gene ID	117178
Gene Symbol	SSX2IP
Uniprot ID	ADIP_HUMAN
Immunogen	A synthetic peptide of human SSX2IP
Immunogen Region	601-614 aa
Specificity	
Immunogen Sequence	



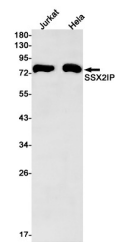
Immunocytochemistry analysis of SSX2IP (green) in K562 using SSX2IP antibody, and DAPI (blue).



Immunohistochemistry analysis of paraffin-embedded Human Brain using SSX2IP antibody. High-pressure and temperature Sodium Citrate pH 6.0 was used for antigen retrieval.



Western blot analysis of SSX2IP in rat kidney lysates using SSX2IP antibody.



Western blot analysis of SSX2IP in Jurkat, Hela lysates using SSX2IP antibody

This product is suitable for in-vitro studies under the RESEARCH USE ONLY [RUO] licence. This product must not be used as for diagnostic or other medical purposes.
St John's Laboratory Ltd, Knowledge Dock Business Centre, University Way, London, E16 2RD | Tel: 0208 223 3081