

Anti-SFPQ antibody (694-707 aa) [R07-9K6] (STJA0011954)

STJA0011954

GENERAL INFORMATION

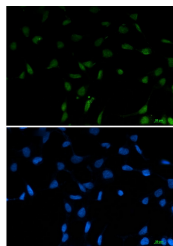
Product Type	Primary antibodies
Short Description	Rabbit monoclonal antibody anti-SFPQ (694-707 aa) is suitable for use in Western Blot, Immunohistochemistry, Immunocytochemistry and Immunofluorescence research applications.
Applications	WB/IHC-F/IHC-P/ICC/IF
Host/Source	Rabbit
Reactivity	Human/Mouse/Rat

PRODUCT PROPERTIES

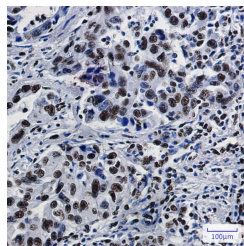
Clonality	Monoclonal
Clone ID	R07-9K6
Concentration	0.3 mg/ml
Conjugation	Unconjugated
Purification	Affinity Purified
Dilution Range	WB 1:500-1:1000 IHC 1:50-1:100 IF 1:50-1:200
Formulation	50mM Tris-Glycine (pH7.4) , 0.15M NaCl, 40% Glycerol, 0.01% Sodium azide and 0.05% BSA
Isotype	IgG
Storage Instruction	Store at 4°C short term. Aliquot and store at -20°C long term. Avoid freeze/thaw cycles.

TARGET INFORMATION

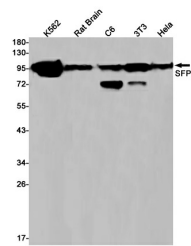
Gene ID	6421
Gene Symbol	SFPQ
Uniprot ID	SFPQ_HUMAN
Immunogen	A synthetic peptide of human SFPQ
Immunogen Region	694-707 aa
Specificity	
Immunogen Sequence	



Immunocytochemistry analysis of SFPQ (green) in 293T using SFPQ antibody, and DAPI (blue).



Immunohistochemistry analysis of paraffin-embedded Human lung cancer tissue using SFPQ antibody. High-pressure and temperature Sodium Citrate pH 6.0 was used for antigen retrieval.



Western blot analysis of SFPQ in K562, rat Brain, C6, 3T3, Hela lysates using SFPQ antibody.