

Anti-SF3B3 antibody (1184-1201 aa) [R07-2K8] (STJA0011953)

STJA0011953

GENERAL INFORMATION

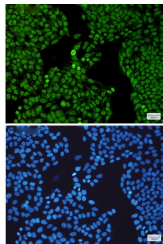
Product Type	Primary antibodies
Short Description	Rabbit monoclonal antibody anti-SF3B3 (1184-1201 aa) is suitable for use in Western Blot, Immunocytochemistry and Immunofluorescence research applications.
Applications	WB/ICC/IF
Host/Source	Rabbit
Reactivity	Human/Mouse/Rat

PRODUCT PROPERTIES

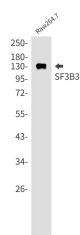
Clonality	Monoclonal
Clone ID	R07-2K8
Concentration	0.3 mg/ml
Conjugation	Unconjugated
Purification	Affinity Purified
Dilution Range	WB 1:500-1:1000 IF 1:50-1:200
Formulation	50mM Tris-Glycine (pH7.4) , 0.15M NaCl, 40% Glycerol, 0.01% Sodium azide and 0.05% BSA
Isotype	IgG
Storage	Store at 4°C short term. Aliquot and store at -20°C long term. Avoid freeze/thaw cycles.
Instruction	

TARGET INFORMATION

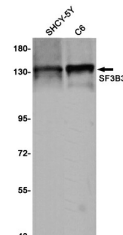
Gene ID	23450
Gene Symbol	SF3B3
Uniprot ID	SF3B3_HUMAN
Immunogen	A synthetic peptide of human SF3B3
Immunogen Region	1184-1201 aa
Specificity	
Immunogen Sequence	



Immunocytochemistry analysis of SF3B3 (green) in Hela using SF3B3 antibody, and DAPI (blue)



Western blot analysis of SF3B3 in Raw264.7 lysates using SF3B3 antibody.



Western blot analysis of SF3B3 in SH-SY5Y, C6 lysates using SF3B3 antibody.

This product is suitable for in-vitro studies under the RESEARCH USE ONLY [RUO] licence. This product must not be used as for diagnostic or other medical purposes.
St John's Laboratory Ltd, Knowledge Dock Business Centre, University Way, London, E16 2RD | Tel: 0208 223 3081