

## Anti-SRSF1 antibody (16-30 aa) [R07-9G7] (STJA0011952)

STJA0011952

### GENERAL INFORMATION

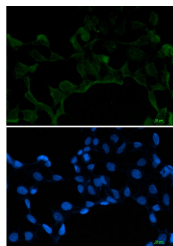
<b>Product Type</b>	Primary antibodies
<b>Short Description</b>	Rabbit monoclonal antibody anti-SF2 (16-30 aa) is suitable for use in Western Blot, Immunohistochemistry, Immunocytochemistry and Immunofluorescence research applications.
<b>Applications</b>	WB/IHC-F/IHC-P/ICC/IF
<b>Host/Source</b>	Rabbit
<b>Reactivity</b>	Human/Mouse/Rat

### PRODUCT PROPERTIES

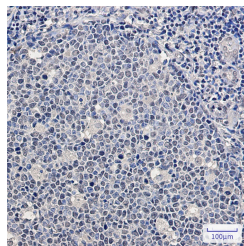
<b>Clonality</b>	Monoclonal
<b>Clone ID</b>	R07-9G7
<b>Concentration</b>	0.3 mg/ml
<b>Conjugation</b>	Unconjugated
<b>Purification</b>	Affinity Purified
<b>Dilution Range</b>	WB 1:500-1:1000 IHC 1:50-1:100 IF 1:50-1:200
<b>Formulation</b>	50mM Tris-Glycine (pH7.4) , 0.15M NaCl, 40% Glycerol, 0.01% Sodium azide and 0.05% BSA
<b>Isotype</b>	IgG
<b>Storage Instruction</b>	Store at 4°C short term. Aliquot and store at -20°C long term. Avoid freeze/thaw cycles.

### TARGET INFORMATION

<b>Gene ID</b>	6426
<b>Gene Symbol</b>	SRSF1
<b>Uniprot ID</b>	SRSF1_HUMAN
<b>Immunogen</b>	A synthetic peptide of human SF2
<b>Immunogen Region</b>	16-30 aa
<b>Specificity</b>	
<b>Immunogen Sequence</b>	



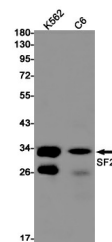
Immunocytochemistry analysis of SF2 (green) in 293T using SF2 antibody, and DAPI (blue).



Immunohistochemistry analysis of paraffin-embedded Human tonsil using SF2 antibody. High-pressure and temperature Sodium Citrate pH 6.0 was used for antigen retrieval.



Western blot analysis of SF2 in 3T3 lysates using SF2 antibody.



Western blot analysis of SF2 in K562, C6 lysates using SF2 antibody

This product is suitable for in-vitro studies under the RESEARCH USE ONLY [RUO] licence. This product must not be used as for diagnostic or other medical purposes.  
St John's Laboratory Ltd, Knowledge Dock Business Centre, University Way, London, E16 2RD | Tel: 0208 223 3081