

Anti-SEMA4D antibody (142-156 aa) [R05-2E3] (STJA0011946)

STJA0011946

GENERAL INFORMATION

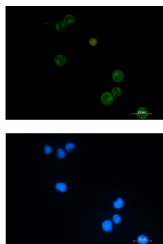
Product Type	Primary antibodies
Short Description	Rabbit monoclonal antibody anti-Semaphorin 4D (142-156 aa) is suitable for use in Western Blot, Immunocytochemistry and Immunofluorescence research applications.
Applications	WB/ICC/IF
Host/Source	Rabbit
Reactivity	Human

PRODUCT PROPERTIES

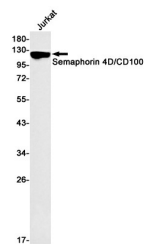
Clonality	Monoclonal
Clone ID	R05-2E3
Concentration	0.3 mg/ml
Conjugation	Unconjugated
Purification	Affinity Purified
Dilution Range	WB 1:500-1:1000 IF 1:50-1:200
Formulation	50mM Tris-Glycine (pH7.4) , 0.15M NaCl, 40% Glycerol, 0.01% Sodium azide and 0.05% BSA
Isotype	IgG
Storage	Store at 4°C short term. Aliquot and store at -20°C long term. Avoid freeze/thaw cycles.
Instruction	

TARGET INFORMATION

Gene ID	10507
Gene Symbol	SEMA4D
Uniprot ID	SEM4D_HUMAN
Immunogen	A synthetic peptide of human Semaphorin 4D
Immunogen Region	142-156 aa
Specificity	
Immunogen Sequence	



Immunocytochemistry analysis of Semaphorin 4D (green) in Jurkat using Semaphorin 4D antibody, and DAPI (blue).



Western blot analysis of Semaphorin 4D/CD100 in Jurkat lysates using Semaphorin 4D/CD100 antibody.

This product is suitable for in-vitro studies under the RESEARCH USE ONLY [RUO] licence. This product must not be used as for diagnostic or other medical purposes.
St John's Laboratory Ltd, Knowledge Dock Business Centre, University Way, London, E16 2RD | Tel: 0208 223 3081