

Anti-SCIN antibody (669-682 aa) [R07-6G2] (STJA0011939)

STJA0011939

GENERAL INFORMATION

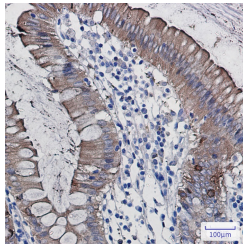
Product Type	Primary antibodies
Short Description	Rabbit monoclonal antibody anti-SCIN (669-682 aa) is suitable for use in Western Blot and Immunohistochemistry research applications.
Applications	WB/IHC-P
Host/Source	Rabbit
Reactivity	Human

PRODUCT PROPERTIES

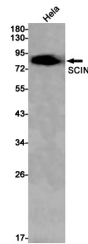
Clonality	Monoclonal
Clone ID	R07-6G2
Concentration	0.3 mg/ml
Conjugation	Unconjugated
Purification	Affinity Purified
Dilution Range	WB 1:500-1:1000 IHC 1:50-1:100
Formulation	50mM Tris-Glycine (pH7.4) , 0.15M NaCl, 40% Glycerol, 0.01% Sodium azide and 0.05% BSA
Isotype	IgG
Storage Instruction	Store at 4°C short term. Aliquot and store at -20°C long term. Avoid freeze/thaw cycles.

TARGET INFORMATION

Gene ID	85477
Gene Symbol	SCIN
Uniprot ID	SCIN_HUMAN
Immunogen	A synthetic peptide of human SCIN
Immunogen Region	669-682 aa
Specificity	
Immunogen Sequence	



Immunohistochemistry analysis of paraffin-embedded Human colon cancer using SCIN antibody. High-pressure and temperature Sodium Citrate pH 6.0 was used for antigen retrieval.



Western blot analysis of SCIN in HeLa lysates using SCIN antibody.