

Anti-RPS6KB1 antibody (1-17 aa) [R01-4B5] (STJA0011927)

STJA0011927

GENERAL INFORMATION

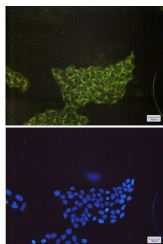
Product Type	Primary antibodies
Short Description	Rabbit monoclonal antibody anti-S6K1 (1-17 aa) is suitable for use in Western Blot, Immunocytochemistry, Immunofluorescence and Immunoprecipitation research applications.
Applications	WB/ICC/IF/IP
Host/Source	Rabbit
Reactivity	Human/Mouse/Rat

PRODUCT PROPERTIES

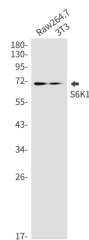
Clonality	Monoclonal
Clone ID	R01-4B5
Concentration	0.3 mg/ml
Conjugation	Unconjugated
Purification	Affinity Purified
Dilution Range	WB 1:500-1:1000 IF 1:50-1:200 IP 1:20
Formulation	50mM Tris-Glycine (pH7.4) , 0.15M NaCl, 40% Glycerol, 0.01% Sodium azide and 0.05% BSA
Isotype	IgG
Storage Instruction	Store at 4°C short term. Aliquot and store at -20°C long term. Avoid freeze/thaw cycles.

TARGET INFORMATION

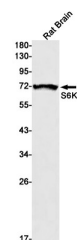
Gene ID	6198
Gene Symbol	RPS6KB1
Uniprot ID	KS6B1_HUMAN
Immunogen	A synthetic peptide of human S6K1
Immunogen Region	1-17 aa
Specificity	
Immunogen Sequence	



Immunocytochemistry analysis of S6K1 (green) in HeLa using S6K1 antibody, and DAPI (blue)



Western blot analysis of S6K1 in Raw264. 7, 3T3 lysates using S6K1 antibody.



Western blot analysis of S6K1 in rat Brain lysates using S6K1 antibody.

This product is suitable for in-vitro studies under the RESEARCH USE ONLY [RUO] licence. This product must not be used as for diagnostic or other medical purposes.
St John's Laboratory Ltd, Knowledge Dock Business Centre, University Way, London, E16 2RD | Tel: 0208 223 3081