

Anti-RAVER2 antibody (492-689 aa) [R09-6H8] (STJA0011887)

STJA0011887

GENERAL INFORMATION

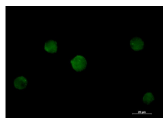
Product Type	Primary antibodies
Short Description	Rabbit monoclonal antibody anti-RAVER2 (492-689 aa) is suitable for use in Western Blot, Immunohistochemistry, Immunocytochemistry, Immunofluorescence and Immunoprecipitation research applications.
Applications	WB/IHC-F/IHC-P/ICC/IF/IP
Host/Source	Rabbit
Reactivity	Human

PRODUCT PROPERTIES

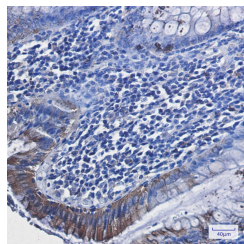
Clonality	Monoclonal
Clone ID	R09-6H8
Concentration	0.3 mg/ml
Conjugation	Unconjugated
Purification	Affinity Purified
Dilution	WB 1:500-1:1000
Range	IHC 1:50-1:100 IF 1:50-1:200 IP 1:20
Formulation	50mM Tris-Glycine (pH7.4) , 0.15M NaCl, 40% Glycerol, 0.01% Sodium azide and 0.05% BSA
Isotype	IgG
Storage Instruction	Store at 4°C short term. Aliquot and store at -20°C long term. Avoid freeze/thaw cycles.

TARGET INFORMATION

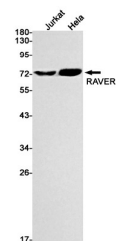
Gene ID	55225
Gene Symbol	RAVER2
Uniprot ID	RAVR2_HUMAN
Immunogen	Recombinant protein of human RAVER2
Immunogen Region	492-689 aa
Specificity	
Immunogen Sequence	



Immunocytochemistry analysis of RAVER2 (green) in K562 using RAVR2 antibody, and DAPI (blue).



Immunohistochemistry analysis of paraffin-embedded Human colon cancer tissue using RAVR2 antibody. High-pressure and temperature Sodium Citrate pH 6.0 was used for antigen retrieval.



Western blot analysis of RAVER2 in Jurkat, HeLa lysates using RAVR2 antibody.