

Anti-GINS1 antibody (152-164 aa) [R04-1A8] (STJA0011845)

STJA0011845

GENERAL INFORMATION

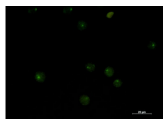
Product Type	Primary antibodies
Short Description	Rabbit monoclonal antibody anti-PSF1 (152-164 aa) is suitable for use in Western Blot, Immunocytochemistry, Immunofluorescence and Immunoprecipitation research applications.
Applications	WB/ICC/IF/IP
Host/Source	Rabbit
Reactivity	Human/Mouse/Rat

PRODUCT PROPERTIES

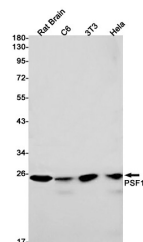
Clonality	Monoclonal
Clone ID	R04-1A8
Concentration	0.3 mg/ml
Conjugation	Unconjugated
Purification	Affinity Purified
Dilution Range	WB 1:500-1:1000 IF 1:50-1:200 IP 1:20
Formulation	50mM Tris-Glycine (pH7.4) , 0.15M NaCl, 40% Glycerol, 0.01% Sodium azide and 0.05% BSA
Isotype	IgG
Storage Instruction	Store at 4°C short term. Aliquot and store at -20°C long term. Avoid freeze/thaw cycles.

TARGET INFORMATION

Gene ID	9837
Gene Symbol	GINS1
Uniprot ID	PSF1_HUMAN
Immunogen	A synthetic peptide of human PSF1
Immunogen Region	152-164 aa
Specificity	
Immunogen Sequence	



Immunocytochemistry analysis of PSF1 (green) in Jurkat using PSF1 antibody, and DAPI (blue).



Western blot analysis of PSF1 in rat Brain, C6, 3T3, HeLa lysates using PSF1 antibody.

This product is suitable for in-vitro studies under the RESEARCH USE ONLY [RUO] licence. This product must not be used as for diagnostic or other medical purposes.
St John's Laboratory Ltd, Knowledge Dock Business Centre, University Way, London, E16 2RD | Tel: 0208 223 3081