

Anti-PRMT1 antibody (327-340 aa) [R08-3H8] (STJA0011830)

STJA0011830

GENERAL INFORMATION

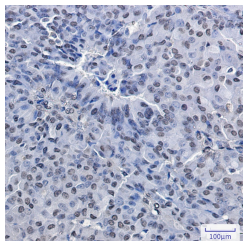
Product Type	Primary antibodies
Short Description	Rabbit monoclonal antibody anti-PRMT1 (327-340 aa) is suitable for use in Western Blot and Immunohistochemistry research applications.
Applications	WB/IHC-P
Host/Source	Rabbit
Reactivity	Human/Rat

PRODUCT PROPERTIES

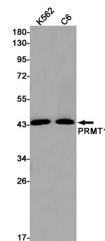
Clonality	Monoclonal
Clone ID	R08-3H8
Concentration	0.3 mg/ml
Conjugation	Unconjugated
Purification	Affinity Purified
Dilution Range	WB 1:500-1:1000 IHC 1:50-1:100
Formulation	50mM Tris-Glycine (pH7.4) , 0.15M NaCl, 40% Glycerol, 0.01% Sodium azide and 0.05% BSA
Isotype	IgG
Storage Instruction	Store at 4°C short term. Aliquot and store at -20°C long term. Avoid freeze/thaw cycles.

TARGET INFORMATION

Gene ID	3276
Gene Symbol	PRMT1
Uniprot ID	ANM1_HUMAN
Immunogen	A synthetic peptide of human PRMT1
Immunogen Region	327-340 aa
Specificity	
Immunogen Sequence	



Immunohistochemistry analysis of paraffin-embedded Human breast cancer using PRMT1 antibody. High-pressure and temperature Sodium Citrate pH 6.0 was used for antigen retrieval.



Western blot analysis of PRMT1 in K562, C6 lysates using PRMT1 antibody.