

Anti-PSEN1 antibody (300-400 aa) [R05-4D4] (STJA0011827)

STJA0011827

GENERAL INFORMATION

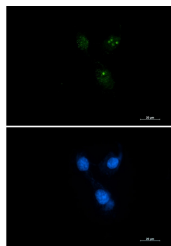
Product Type	Primary antibodies
Short Description	Rabbit monoclonal antibody anti-Presenilin 1 (300-400 aa) is suitable for use in Western Blot, Immunocytochemistry, Immunofluorescence and Immunoprecipitation research applications.
Applications	WB/ICC/IF/IP
Host/Source	Rabbit
Reactivity	Human/Mouse/Rat

PRODUCT PROPERTIES

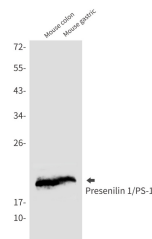
Clonality	Monoclonal
Clone ID	R05-4D4
Concentration	0.3 mg/ml
Conjugation	Unconjugated
Purification	Affinity Purified
Dilution Range	WB 1:500-1:1000 IF 1:50-1:200 IP 1:20
Formulation	50mM Tris-Glycine (pH7.4) , 0.15M NaCl, 40% Glycerol, 0.01% Sodium azide and 0.05% BSA
Isotype	IgG
Storage Instruction	Store at 4°C short term. Aliquot and store at -20°C long term. Avoid freeze/thaw cycles.

TARGET INFORMATION

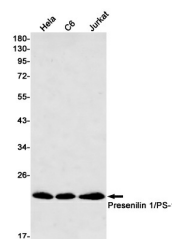
Gene ID	5663
Gene Symbol	PSEN1
Uniprot ID	PSN1_HUMAN
Immunogen	A synthetic peptide of human Presenilin 1
Immunogen Region	300-400 aa
Specificity	
Immunogen Sequence	



Immunocytochemistry analysis of Presenilin 1 (green) in SKOV-3 using Presenilin 1 antibody, and DAPI (blue).



Western blot analysis of Presenilin 1/PS1 in mouse colon, mouse gastric lysates using Presenilin 1/PS1 antibody.



Western blot analysis of Presenilin 1/PS1 in HeLa, C6, Jurkat lysates using Presenilin 1/PS1 antibody.