

Anti-PPP1CB antibody (314-327 aa) [R09-6B7] (STJA0011819)

STJA0011819

GENERAL INFORMATION

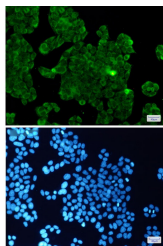
Product Type	Primary antibodies
Short Description	Rabbit monoclonal antibody anti-PP1C beta (314-327 aa) is suitable for use in Western Blot, Immunohistochemistry, Immunocytochemistry, Immunofluorescence and Immunoprecipitation research applications.
Applications	WB/IHC-F/IHC-P/ICC/IF/IP
Host/Source	Rabbit
Reactivity	Human/Mouse/Rat

PRODUCT PROPERTIES

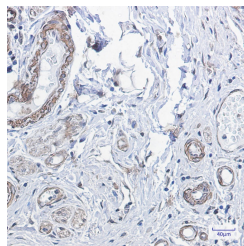
Clonality	Monoclonal
Clone ID	R09-6B7
Concentration	0.3 mg/ml
Conjugation	Unconjugated
Purification	Affinity Purified
Dilution	WB 1:500-1:1000
Range	IHC 1:50-1:100 IF 1:50-1:200 IP 1:20
Formulation	50mM Tris-Glycine (pH7.4) , 0.15M NaCl, 40% Glycerol, 0.01% Sodium azide and 0.05% BSA
Isotype	IgG
Storage Instruction	Store at 4°C short term. Aliquot and store at -20°C long term. Avoid freeze/thaw cycles.

TARGET INFORMATION

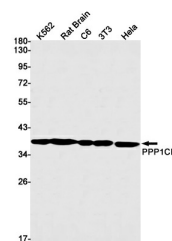
Gene ID	5500
Gene Symbol	PPP1CB
Uniprot ID	PP1B_HUMAN
Immunogen	A synthetic peptide of human PPP1CB
Immunogen Region	314-327 aa
Specificity	
Immunogen Sequence	



Immunocytochemistry analysis of PPP1CB (green) in HeLa using PPP1CB antibody, and DAPI (blue)



Immunohistochemistry analysis of paraffin-embedded Human colon cancer using PPP1CB antibody. High-pressure and temperature Sodium Citrate pH 6.0 was used for antigen retrieval.



Western blot analysis of PPP1CB in K562, rat Brain, C6, 3T3, HeLa lysates using PP1C beta antibody.