

Anti-PABPN1 antibody (16-28 aa) [R02-8B1] (STJA0011740)

STJA0011740

GENERAL INFORMATION

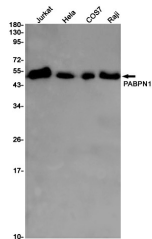
| | |
|--------------------------|---|
| Product Type | Primary antibodies |
| Short Description | Rabbit monoclonal antibody anti-PABPN1 (16-28 aa) is suitable for use in Western Blot, Immunohistochemistry, Immunocytochemistry, Immunofluorescence and Immunoprecipitation research applications. |
| Applications | WB/IHC-F/IHC-P/ICC/IF/IP |
| Host/Source | Rabbit |
| Reactivity | Human/Mouse |

PRODUCT PROPERTIES

| | |
|----------------------------|--|
| Clonality | Monoclonal |
| Clone ID | R02-8B1 |
| Concentration | 0.3 mg/ml |
| Conjugation | Unconjugated |
| Purification | Affinity Purified |
| Dilution | WB 1:500-1:1000 |
| Range | IHC 1:50-1:100 IF 1:50-1:200 IP 1:20 |
| Formulation | 50mM Tris-Glycine (pH7.4) , 0.15M NaCl, 40% Glycerol, 0.01% Sodium azide and 0.05% BSA |
| Isotype | IgG |
| Storage Instruction | Store at 4°C short term. Aliquot and store at -20°C long term. Avoid freeze/thaw cycles. |

TARGET INFORMATION

| | |
|---------------------------|-------------------------------------|
| Gene ID | 8106 |
| Gene Symbol | PABPN1 |
| Uniprot ID | PABP2_HUMAN |
| Immunogen | A synthetic peptide of human PABPN1 |
| Immunogen Region | 16-28 aa |
| Specificity | |
| Immunogen Sequence | |



Western blot analysis of PABPN1 in Jurkat, HeLa, COS7, Raji lysates using PABPN1 antibody.

This product is suitable for in-vitro studies under the RESEARCH USE ONLY [RUO] licence. This product must not be used as for diagnostic or other medical purposes.
St John's Laboratory Ltd, Knowledge Dock Business Centre, University Way, London, E16 2RD | Tel: 0208 223 3081