

Anti-OSBPL1A antibody (937-950 aa) [R02-2E2] (STJA0011720)

STJA0011720

GENERAL INFORMATION

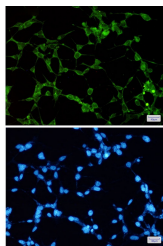
Product Type	Primary antibodies
Short Description	Rabbit monoclonal antibody anti-ORP1 (937-950 aa) is suitable for use in Western Blot, Immunocytochemistry, Immunofluorescence and Immunoprecipitation research applications.
Applications	WB/ICC/IF/IP
Host/Source	Rabbit
Reactivity	Human/Mouse/Rat

PRODUCT PROPERTIES

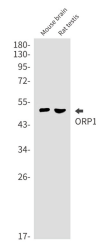
Clonality	Monoclonal
Clone ID	R02-2E2
Concentration	0.3 mg/ml
Conjugation	Unconjugated
Purification	Affinity Purified
Dilution Range	WB 1:500-1:1000 IF 1:50-1:200 IP 1:20
Formulation	50mM Tris-Glycine (pH7.4) , 0.15M NaCl, 40% Glycerol, 0.01% Sodium azide and 0.05% BSA
Isotype	IgG
Storage Instruction	Store at 4°C short term. Aliquot and store at -20°C long term. Avoid freeze/thaw cycles.

TARGET INFORMATION

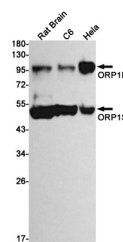
Gene ID	114876
Gene Symbol	OSBPL1A
Uniprot ID	OSBL1_HUMAN
Immunogen	A synthetic peptide of human ORP1
Immunogen Region	937-950 aa
Specificity	
Immunogen Sequence	



Immunocytochemistry analysis of ORP1 (green) in 293T using ORP1 antibody, and DAPI (blue).



Western blot analysis of ORP1 in mouse brain, rat testis lysates using ORP1 antibody.



Western blot analysis of ORP1 in rat Brain, O6, HeLa lysates using ORP1 antibody

This product is suitable for in-vitro studies under the RESEARCH USE ONLY [RUO] licence. This product must not be used as for diagnostic or other medical purposes.
St John's Laboratory Ltd, Knowledge Dock Business Centre, University Way, London, E16 2RD | Tel: 0208 223 3081