

Anti-NTHL1 antibody (24-126 aa) [R08-8E9] (STJA0011703)

STJA0011703

GENERAL INFORMATION

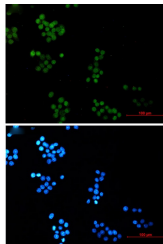
Product Type	Primary antibodies
Short Description	Rabbit monoclonal antibody anti-NTH1 (24-126 aa) is suitable for use in Western Blot, Immunocytochemistry and Immunofluorescence research applications.
Applications	WB/ICC/IF
Host/Source	Rabbit
Reactivity	Human

PRODUCT PROPERTIES

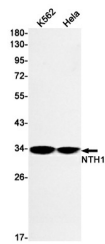
Clonality	Monoclonal
Clone ID	R08-8E9
Concentration	0.3 mg/ml
Conjugation	Unconjugated
Purification	Affinity Purified
Dilution Range	WB 1:500-1:1000 IF 1:50-1:200
Formulation	50mM Tris-Glycine (pH7.4) , 0.15M NaCl, 40% Glycerol, 0.01% Sodium azide and 0.05% BSA
Isotype	IgG
Storage	Store at 4°C short term. Aliquot and store at -20°C long term. Avoid freeze/thaw cycles.
Instruction	

TARGET INFORMATION

Gene ID	4913
Gene Symbol	NTHL1
Uniprot ID	NTH_HUMAN
Immunogen	Recombinant protein of human NTH1
Immunogen Region	24-126 aa
Specificity	
Immunogen Sequence	



Immunocytochemistry analysis of NTH1 (green) in HeLa using NTH1 antibody, and DAPI (blue).



Western blot analysis of NTH1 in K562, HeLa lysates using NTH1 antibody.

This product is suitable for in-vitro studies under the RESEARCH USE ONLY [RUO] licence. This product must not be used as for diagnostic or other medical purposes.
St John's Laboratory Ltd, Knowledge Dock Business Centre, University Way, London, E16 2RD | Tel: 0208 223 3081