

## Anti-ACTA1 antibody (363-376 aa) [R03-5I2] (STJA0011635)

STJA0011635

### GENERAL INFORMATION

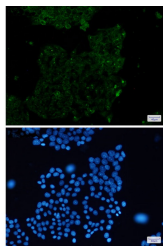
<b>Product Type</b>	Primary antibodies
<b>Short Description</b>	Rabbit monoclonal antibody anti-alpha Skeletal Muscle Actin (363-376 aa) is suitable for use in Western Blot, Immunohistochemistry, Immunocytochemistry, Immunofluorescence and Immunoprecipitation research applications.
<b>Applications</b>	WB/IHC-F/IHC-P/ICC/IF/IP
<b>Host/Source</b>	Rabbit
<b>Reactivity</b>	Human/Rat

### PRODUCT PROPERTIES

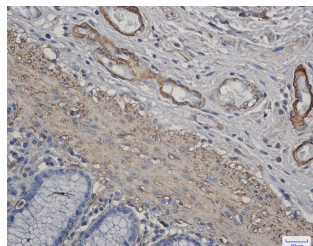
<b>Clonality</b>	Monoclonal
<b>Clone ID</b>	R03-5I2
<b>Concentration</b>	0.3 mg/ml
<b>Conjugation</b>	Unconjugated
<b>Purification</b>	Affinity Purified
<b>Dilution</b>	WB 1:500-1:1000
<b>Range</b>	IHC 1:50-1:100 IF 1:50-1:200 IP 1:20
<b>Formulation</b>	50mM Tris-Glycine (pH7.4) , 0.15M NaCl, 40% Glycerol, 0.01% Sodium azide and 0.05% BSA
<b>Isotype</b>	IgG
<b>Storage</b>	Store at 4°C short term. Aliquot and store at -20°C long term. Avoid freeze/thaw cycles.
<b>Instruction</b>	

### TARGET INFORMATION

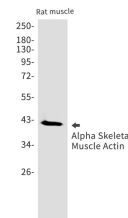
<b>Gene ID</b>	58
<b>Gene Symbol</b>	ACTA1
<b>Uniprot ID</b>	ACTS_HUMAN
<b>Immunogen</b>	A synthetic peptide of human muscle Actin
<b>Immunogen</b>	363-376 aa
<b>Region</b>	
<b>Specificity</b>	
<b>Immunogen</b>	
<b>Sequence</b>	



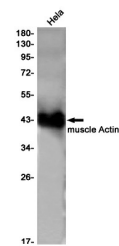
Immunocytochemistry analysis of muscle Actin (green) in HeLa using muscle Actin antibody, and DAPI (blue).



Immunohistochemistry analysis of paraffin-embedded Human colon cancer using muscle Actin antibody. High-pressure and temperature Sodium Citrate pH 6.0 was used for antigen retrieval.



Western blot analysis of Alpha Skeletal Muscle Actin in rat muscle lysates using alpha Skeletal Muscle Actin antibody.



Western blot analysis of muscle Actin in HeLa lysates using muscle Actin antibody.