

Anti-MAP3K2 antibody (11-27 aa) [R06-2K7] (STJA0011589)

STJA0011589

GENERAL INFORMATION

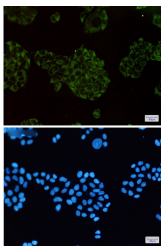
Product Type	Primary antibodies
Short Description	Rabbit monoclonal antibody anti-MEKK2 (11-27 aa) is suitable for use in Western Blot, Immunocytochemistry, Immunofluorescence and Immunoprecipitation research applications.
Applications	WB/ICC/IF/IP
Host/Source	Rabbit
Reactivity	Human/Mouse/Rat

PRODUCT PROPERTIES

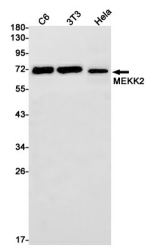
Clonality	Monoclonal
Clone ID	R06-2K7
Concentration	0.3 mg/ml
Conjugation	Unconjugated
Purification	Affinity Purified
Dilution Range	WB 1:500-1:1000 IF 1:50-1:200 IP 1:20
Formulation	50mM Tris-Glycine (pH7.4) , 0.15M NaCl, 40% Glycerol, 0.01% Sodium azide and 0.05% BSA
Isotype	IgG
Storage Instruction	Store at 4°C short term. Aliquot and store at -20°C long term. Avoid freeze/thaw cycles.

TARGET INFORMATION

Gene ID	10746
Gene Symbol	MAP3K2
Uniprot ID	M3K2_HUMAN
Immunogen	A synthetic peptide of human MEKK2
Immunogen Region	11-27 aa
Specificity	
Immunogen Sequence	



Immunocytochemistry analysis of MEKK2 (green) in HeLa using MEKK2 antibody, and DAPI (blue)



Western blot analysis of MEKK2 in C6, 3T3, HeLa lysates using MEKK2 antibody.

This product is suitable for in-vitro studies under the RESEARCH USE ONLY [RUO] licence. This product must not be used as for diagnostic or other medical purposes.
St John's Laboratory Ltd, Knowledge Dock Business Centre, University Way, London, E16 2RD | Tel: 0208 223 3081