

Anti-MCM7 antibody (671-683 aa) [R02-7D2] (STJA0011578)

STJA0011578

GENERAL INFORMATION

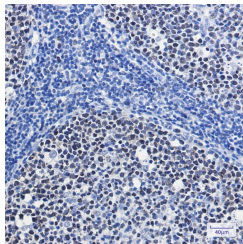
| | |
|--------------------------|--|
| Product Type | Primary antibodies |
| Short Description | Rabbit monoclonal antibody anti-MCM7 (671-683 aa) is suitable for use in Western Blot, Immunohistochemistry and Immunoprecipitation research applications. |
| Applications | WB/IHC-P/IP |
| Host/Source | Rabbit |
| Reactivity | Human/Mouse/Rat |

PRODUCT PROPERTIES

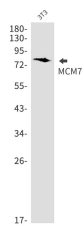
| | |
|----------------------------|--|
| Clonality | Monoclonal |
| Clone ID | R02-7D2 |
| Concentration | 0.3 mg/ml |
| Conjugation | Unconjugated |
| Purification | Affinity Purified |
| Dilution Range | WB 1:500-1:1000 IHC 1:50-1:100 IP 1:20 |
| Formulation | 50mM Tris-Glycine (pH7.4) , 0.15M NaCl, 40% Glycerol, 0.01% Sodium azide and 0.05% BSA |
| Isotype | IgG |
| Storage Instruction | Store at 4°C short term. Aliquot and store at -20°C long term. Avoid freeze/thaw cycles. |

TARGET INFORMATION

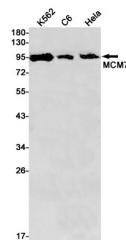
| | |
|---------------------------|-----------------------------------|
| Gene ID | 4176 |
| Gene Symbol | MCM7 |
| Uniprot ID | MCM7_HUMAN |
| Immunogen | A synthetic peptide of human MCM7 |
| Immunogen Region | 671-683 aa |
| Specificity | |
| Immunogen Sequence | |



Immunohistochemistry analysis of paraffin-embedded Human tonsil using MCM7 antibody. High-pressure and temperature Sodium Citrate pH 6.0 was used for antigen retrieval.



Western blot analysis of MCM7 in 3T3 lysates using MCM7 antibody.



Western blot analysis of MCM7 in K562, C6, HeLa lysates using MCM7 antibody.