

## Anti-CHUK antibody (1-19 aa) [R07-9I7] (STJA0011485)

STJA0011485

### GENERAL INFORMATION

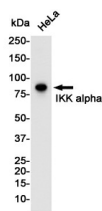
<b>Product Type</b>	Primary antibodies
<b>Short Description</b>	Rabbit monoclonal antibody anti-IKK alpha (1-19 aa) is suitable for use in Western Blot research applications.
<b>Applications</b>	WB
<b>Host/Source</b>	Rabbit
<b>Reactivity</b>	Human/Mouse/Rat

### PRODUCT PROPERTIES

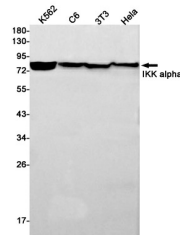
<b>Clonality</b>	Monoclonal
<b>Clone ID</b>	R07-9I7
<b>Concentration</b>	0.3 mg/ml
<b>Conjugation</b>	Unconjugated
<b>Purification</b>	Affinity Purified
<b>Dilution Range</b>	WB 1:500-1:1000
<b>Formulation</b>	50mM Tris-Glycine (pH7.4) , 0.15M NaCl, 40% Glycerol, 0.01% Sodium azide and 0.05% BSA
<b>Isotype</b>	IgG
<b>Storage Instruction</b>	Store at 4°C short term. Aliquot and store at -20°C long term. Avoid freeze/thaw cycles.

### TARGET INFORMATION

<b>Gene ID</b>	1147
<b>Gene Symbol</b>	CHUK
<b>Uniprot ID</b>	IKKA_HUMAN
<b>Immunogen</b>	A synthetic peptide of human IKK alpha
<b>Immunogen Region</b>	1-19 aa
<b>Specificity</b>	
<b>Immunogen Sequence</b>	



Western blot analysis of IKK alpha in HeLa lysates using IKK alpha antibody.



Western blot analysis of IKK alpha in K562, C6, 3T3, HeLa lysates using IKK alpha antibody.

This product is suitable for in-vitro studies under the RESEARCH USE ONLY [RUO] licence. This product must not be used as for diagnostic or other medical purposes.  
St John's Laboratory Ltd, Knowledge Dock Business Centre, University Way, London, E16 2RD | Tel: 0208 223 3081