

Anti-GLA antibody (101-115 aa) [R01-9J4] (STJA0011349)

STJA0011349

GENERAL INFORMATION

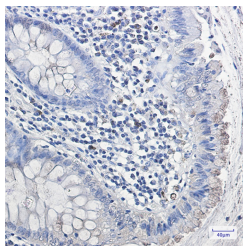
Product Type	Primary antibodies
Short Description	Rabbit monoclonal antibody anti-Galactosidase alpha (101-115 aa) is suitable for use in Western Blot, Immunohistochemistry and Immunoprecipitation research applications.
Applications	WB/IHC-P/IP
Host/Source	Rabbit
Reactivity	Human

PRODUCT PROPERTIES

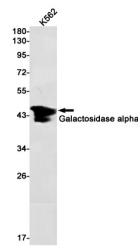
Clonality	Monoclonal
Clone ID	R01-9J4
Concentration	0.3 mg/ml
Conjugation	Unconjugated
Purification	Affinity Purified
Dilution Range	WB 1:500-1:1000 IHC 1:50-1:100 IP 1:20
Formulation	50mM Tris-Glycine (pH7.4) , 0.15M NaCl, 40% Glycerol, 0.01% Sodium azide and 0.05% BSA
Isotype	IgG
Storage	Store at 4°C short term. Aliquot and store at -20°C long term. Avoid freeze/thaw cycles.
Instruction	

TARGET INFORMATION

Gene ID	2717
Gene Symbol	GLA
Uniprot ID	AGAL_HUMAN
Immunogen	A synthetic peptide of human Galactosidase alpha
Immunogen Region	101-115 aa
Specificity	
Immunogen Sequence	



Immunohistochemistry analysis of paraffin-embedded human colon cancer using Galactosidase alpha antibody. High-pressure and temperature Sodium Citrate pH 6.0 was used for antigen retrieval.



Western blot analysis of Galactosidase alpha in K562 lysates using Galactosidase alpha antibody.

This product is suitable for in-vitro studies under the RESEARCH USE ONLY [RUO] licence. This product must not be used as for diagnostic or other medical purposes.
St John's Laboratory Ltd, Knowledge Dock Business Centre, University Way, London, E16 2RD | Tel: 0208 223 3081