

Anti-G3BP1 antibody (419-432 aa) [R06-5D2] (STJA0011346)

STJA0011346

GENERAL INFORMATION

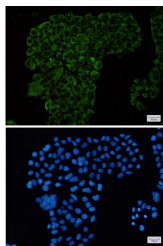
Product Type	Primary antibodies
Short Description	Rabbit monoclonal antibody anti-G3BP (419-432 aa) is suitable for use in Western Blot, Immunohistochemistry, Immunocytochemistry, Immunofluorescence and Immunoprecipitation research applications.
Applications	WB/IHC-F/IHC-P/ICC/IF/IP
Host/Source	Rabbit
Reactivity	Human/Mouse/Rat

PRODUCT PROPERTIES

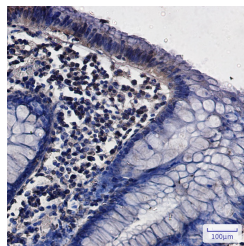
Clonality	Monoclonal
Clone ID	R06-5D2
Concentration	0.3 mg/ml
Conjugation	Unconjugated
Purification	Affinity Purified
Dilution	WB 1:500-1:1000
Range	IHC 1:50-1:100 IF 1:50-1:200 IP 1:20
Formulation	50mM Tris-Glycine (pH7.4) , 0.15M NaCl, 40% Glycerol, 0.01% Sodium azide and 0.05% BSA
Isotype	IgG
Storage Instruction	Store at 4°C short term. Aliquot and store at -20°C long term. Avoid freeze/thaw cycles.

TARGET INFORMATION

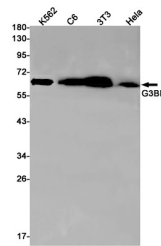
Gene ID	10146
Gene Symbol	G3BP1
Uniprot ID	G3BP1_HUMAN
Immunogen	A synthetic peptide of human G3BP
Immunogen Region	419-432 aa
Specificity	
Immunogen Sequence	



Immunocytochemistry analysis of G3BP1 (green) in HeLa using G3BP1 antibody, and DAPI (blue)



Immunohistochemistry analysis of paraffin-embedded Human colon cancer using G3BP1 antibody. High-pressure and temperature Sodium Citrate pH 6.0 was used for antigen retrieval.



Western blot analysis of G3BP1 in K562, C6, 3T3, HeLa lysates using G3BP1 antibody.