

Anti-EWSR1 antibody (349-362 aa) [R04-4B3] (STJA0011293)

STJA0011293

GENERAL INFORMATION

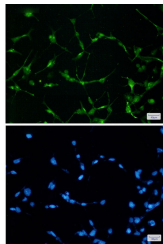
Product Type	Primary antibodies
Short Description	Rabbit monoclonal antibody anti-EWSR1 (349-362 aa) is suitable for use in Western Blot, Immunocytochemistry and Immunofluorescence research applications.
Applications	WB/ICC/IF
Host/Source	Rabbit
Reactivity	Human

PRODUCT PROPERTIES

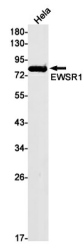
Clonality	Monoclonal
Clone ID	R04-4B3
Concentration	0.3 mg/ml
Conjugation	Unconjugated
Purification	Affinity Purified
Dilution Range	WB 1:500-1:1000 IF 1:50-1:200
Formulation	50mM Tris-Glycine (pH7.4) , 0.15M NaCl, 40% Glycerol, 0.01% Sodium azide and 0.05% BSA
Isotype	IgG
Storage	Store at 4°C short term. Aliquot and store at -20°C long term. Avoid freeze/thaw cycles.
Instruction	

TARGET INFORMATION

Gene ID	2130
Gene Symbol	EWSR1
Uniprot ID	EWS_HUMAN
Immunogen	A synthetic peptide of human EWSR1
Immunogen Region	349-362 aa
Specificity	
Immunogen Sequence	



Immunocytochemistry analysis of EWSR1 (green) in 293T using EWSR1 antibody, and DAPI (blue).



Western blot analysis of EWSR1 in HeLa lysates using EWSR1 antibody.

This product is suitable for in-vitro studies under the RESEARCH USE ONLY [RUO] licence. This product must not be used as for diagnostic or other medical purposes.
St John's Laboratory Ltd, Knowledge Dock Business Centre, University Way, London, E16 2RD | Tel: 0208 223 3081