

Anti-EIF2A antibody (480-494 aa) [R08-8E2] (STJA0011265)

STJA0011265

GENERAL INFORMATION

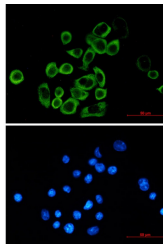
Product Type	Primary antibodies
Short Description	Rabbit monoclonal antibody anti-eIF2A (480-494 aa) is suitable for use in Western Blot, Immunocytochemistry and Immunofluorescence research applications.
Applications	WB/ICC/IF
Host/Source	Rabbit
Reactivity	Human/Mouse/Rat

PRODUCT PROPERTIES

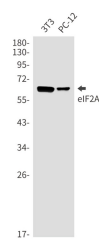
Clonality	Monoclonal
Clone ID	R08-8E2
Concentration	0.3 mg/ml
Conjugation	Unconjugated
Purification	Affinity Purified
Dilution Range	WB 1:500-1:1000 IF 1:50-1:200
Formulation	50mM Tris-Glycine (pH7.4) , 0.15M NaCl, 40% Glycerol, 0.01% Sodium azide and 0.05% BSA
Isotype	IgG
Storage	Store at 4°C short term. Aliquot and store at -20°C long term. Avoid freeze/thaw cycles.
Instruction	

TARGET INFORMATION

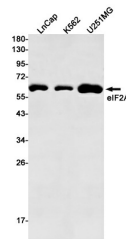
Gene ID	83939
Gene Symbol	EIF2A
Uniprot ID	EIF2A_HUMAN
Immunogen	A synthetic peptide of human eIF2A
Immunogen Region	480-494 aa
Specificity	
Immunogen Sequence	



Immunocytochemistry analysis of eIF2A (green) in MCF-7 using eIF2A antibody, and DAPI (blue)



Western blot analysis of eIF2A in 3T3, PC-12 lysates using eIF2A antibody.



Western blot analysis of eIF2A in LnCap, K562, U251MG lysates using eIF2A antibody.

This product is suitable for in-vitro studies under the RESEARCH USE ONLY [RUO] licence. This product must not be used as for diagnostic or other medical purposes.
St John's Laboratory Ltd, Knowledge Dock Business Centre, University Way, London, E16 2RD | Tel: 0208 223 3081