

Anti-GSDME antibody (1-270 aa) [R07-5I1] (STJA0011231)

STJA0011231

GENERAL INFORMATION

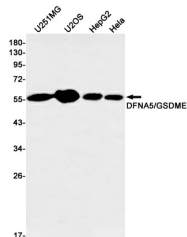
Product Type	Primary antibodies
Short Description	Rabbit monoclonal antibody anti-GSDME (1-270 aa) is suitable for use in Western Blot and Immunoprecipitation research applications.
Applications	WB/IP
Host/Source	Rabbit
Reactivity	Human

PRODUCT PROPERTIES

Clonality	Monoclonal
Clone ID	R07-5I1
Concentration	0.3 mg/ml
Conjugation	Unconjugated
Purification	Affinity Purified
Dilution Range	WB 1:500-1:1000 IP 1:20
Formulation	50mM Tris-Glycine (pH7.4) , 0.15M NaCl, 40% Glycerol, 0.01% Sodium azide and 0.05% BSA
Isotype	IgG
Storage Instruction	Store at 4°C short term. Aliquot and store at -20°C long term. Avoid freeze/thaw cycles.

TARGET INFORMATION

Gene ID	1687
Gene Symbol	GSDME
Uniprot ID	GSDME_HUMAN
Immunogen	Recombinant protein of human DFNA5/GSDME
Immunogen Region	1-270 aa
Specificity	
Immunogen Sequence	



Western blot analysis of DFNA5/GSDME in U251MG, U2OS, HepG2, Hela lysates using GSDME antibody.

This product is suitable for in-vitro studies under the RESEARCH USE ONLY [RUO] licence. This product must not be used as for diagnostic or other medical purposes.
St John's Laboratory Ltd, Knowledge Dock Business Centre, University Way, London, E16 2RD | Tel: 0208 223 3081