

## Anti-PPIB antibody (181-195 aa) [R01-2F8] (STJA0011197)

STJA0011197

### GENERAL INFORMATION

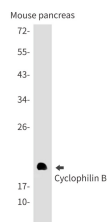
<b>Product Type</b>	Primary antibodies
<b>Short Description</b>	Rabbit monoclonal antibody anti-Cyclophilin B (181-195 aa) is suitable for use in Western Blot research applications.
<b>Applications</b>	WB
<b>Host/Source</b>	Rabbit
<b>Reactivity</b>	Human/Mouse/Rat

### PRODUCT PROPERTIES

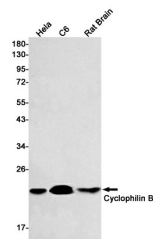
<b>Clonality</b>	Monoclonal
<b>Clone ID</b>	R01-2F8
<b>Concentration</b>	0.3 mg/ml
<b>Conjugation</b>	Unconjugated
<b>Purification</b>	Affinity Purified
<b>Dilution Range</b>	WB 1:500-1:1000
<b>Formulation</b>	50mM Tris-Glycine (pH7.4) , 0.15M NaCl, 40% Glycerol, 0.01% Sodium azide and 0.05% BSA
<b>Isotype</b>	IgG
<b>Storage Instruction</b>	Store at 4°C short term. Aliquot and store at -20°C long term. Avoid freeze/thaw cycles.

### TARGET INFORMATION

<b>Gene ID</b>	5479
<b>Gene Symbol</b>	PPIB
<b>Uniprot ID</b>	PPIB_HUMAN
<b>Immunogen</b>	A synthetic peptide of human Cyclophilin B
<b>Immunogen Region</b>	181-195 aa
<b>Specificity</b>	
<b>Immunogen Sequence</b>	



Western blot analysis of Cyclophilin B in mouse pancreas lysates using Cyclophilin B antibody.



Western blot analysis of Cyclophilin B in HeLa, C6, rat Brain lysates using Cyclophilin B antibody.

This product is suitable for in-vitro studies under the RESEARCH USE ONLY [RUO] licence. This product must not be used as for diagnostic or other medical purposes.  
St John's Laboratory Ltd, Knowledge Dock Business Centre, University Way, London, E16 2RD | Tel: 0208 223 3081