

## Anti-CHAT antibody (735-748 aa) [R07-1G8] (STJA0011140)

STJA0011140

### GENERAL INFORMATION

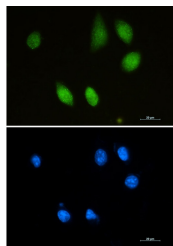
<b>Product Type</b>	Primary antibodies
<b>Short Description</b>	Rabbit monoclonal antibody anti-Choline Acetyltransferase (735-748 aa) is suitable for use in Western Blot, Immunocytochemistry, Immunofluorescence and Immunoprecipitation research applications.
<b>Applications</b>	WB/ICC/IF/IP
<b>Host/Source</b>	Rabbit
<b>Reactivity</b>	Mouse/Rat

### PRODUCT PROPERTIES

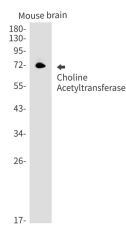
<b>Clonality</b>	Monoclonal
<b>Clone ID</b>	R07-1G8
<b>Concentration</b>	0.3 mg/ml
<b>Conjugation</b>	Unconjugated
<b>Purification</b>	Affinity Purified
<b>Dilution</b>	WB 1:500-1:1000
<b>Range</b>	IF 1:50-1:200 IP 1:20
<b>Formulation</b>	50mM Tris-Glycine (pH7.4) , 0.15M NaCl, 40% Glycerol, 0.01% Sodium azide and 0.05% BSA
<b>Isotype</b>	IgG
<b>Storage</b>	Store at 4°C short term. Aliquot and store at -20°C long term. Avoid freeze/thaw cycles.
<b>Instruction</b>	

### TARGET INFORMATION

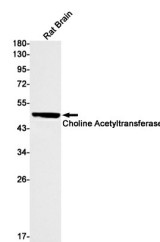
<b>Gene ID</b>	1103
<b>Gene Symbol</b>	CHAT
<b>Uniprot ID</b>	CLAT_HUMAN
<b>Immunogen</b>	A synthetic peptide of human Choline Acetyltransferase
<b>Immunogen Region</b>	735-748 aa
<b>Specificity</b>	
<b>Immunogen Sequence</b>	



Immunocytochemistry analysis of Choline Acetyltransferase (green) in SH-SY5Y cells using Choline Acetyltransferase antibody, and DAPI (blue).



Western blot analysis of Choline Acetyltransferase in mouse brain lysates using Choline Acetyltransferase antibody.



Western blot analysis of Choline Acetyltransferase in rat Brain lysates using Choline Acetyltransferase antibody

This product is suitable for in-vitro studies under the RESEARCH USE ONLY [RUO] licence. This product must not be used as for diagnostic or other medical purposes.  
St John's Laboratory Ltd, Knowledge Dock Business Centre, University Way, London, E16 2RD | Tel: 0208 223 3081