

Anti-ACAP2 antibody (696-710 aa) [R05-8H3] (STJA0011135)

STJA0011135

GENERAL INFORMATION

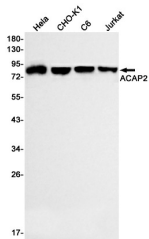
Product Type	Primary antibodies
Short Description	Rabbit monoclonal antibody anti-ACAP2 (696-710 aa) is suitable for use in Western Blot research applications.
Applications	WB
Host/Source	Rabbit
Reactivity	Human/Hamster/Rat

PRODUCT PROPERTIES

Clonality	Monoclonal
Clone ID	R05-8H3
Concentration	0.3 mg/ml
Conjugation	Unconjugated
Purification	Affinity Purified
Dilution Range	WB 1:500-1:1000
Formulation	50mM Tris-Glycine (pH7.4) , 0.15M NaCl, 40% Glycerol, 0.01% Sodium azide and 0.05% BSA
Isotype	IgG
Storage Instruction	Store at 4°C short term. Aliquot and store at -20°C long term. Avoid freeze/thaw cycles.

TARGET INFORMATION

Gene ID	23527
Gene Symbol	ACAP2
Uniprot ID	ACAP2_HUMAN
Immunogen	A synthetic peptide of human Centaurin beta 2
Immunogen Region	696-710 aa
Specificity	
Immunogen Sequence	



Western blot analysis of ACAP2 in HeLa, CHO-K1, C6, Jurkat lysates using ACAP2 antibody.

This product is suitable for in-vitro studies under the RESEARCH USE ONLY [RUO] licence. This product must not be used as for diagnostic or other medical purposes.
St John's Laboratory Ltd, Knowledge Dock Business Centre, University Way, London, E16 2RD | Tel: 0208 223 3081